

Request for Proposals

The West Clermont Local School District (the “District”) seeks competitive proposals for the following purchase, subject to the terms and conditions of this Request for Proposal (the “RFP”) and accompanying materials:

Project: West Clermont Video Surveillance System Update

RFP Issue Date: December 2, 2022

Response Deadline: January 6, 2022 at 3:00 p.m. local time

The Project is being procured through a competitive proposal process in accordance with federal Uniform Guidance and outside the scope of the statutory bidding requirements for public school districts; as Ohio Revised Code Section 3313.46 only requires competitive bidding for “school buildings,” and the relevant items set forth in this Request for Proposals is for technology equipment. Any references in the Contract Documents to “bid” or “bidding” are to be read consistent with the proposal process being implemented.

Article 1 — General Information

1.1 Background Information

1.1.1 Goal. The goal of this RFP is to update older portions of the District’s video surveillance system in order to increase reliability. At the same time, during recent safety assessments the District identified the need for added capabilities and improved coverage in some facilities. *Milestone XProtect Professional+* Video Management System (VMS) has been selected as the VMS of choice for this project. At the completion of this project, all active cameras and video surveillance servers, including new equipment provided as part of this project and existing equipment that is being retained, are to be integrated and manageable from a single instance of a user interface. All VMS permissions must be assignable through integration with Microsoft Active Directory. Integrations with the ISONAS access control system will also be necessary at each school building to the degree that is possible.

1.1.2 Background. The District’s video surveillance system has been installed in many phases over more than twelve years. In some cases, older analog cameras were adapted to operate within an Internet Protocol (IP) based system. The execution of construction projects throughout the district have introduced hardware in some locations that is less than enterprise class. In recent years, hard drives in several servers have been failing with increasing frequency, resulting in the loss of critical surveillance footage.

1.1.3 Network. The District’s Wide Area Network (WAN) is a hub and spoke configuration with 10 Gigabit per second (Gbps) links from each building to West Clermont High School (WCHS). WCHS has a Main Distribution Frame (MDF) adequate for hosting a centralized video surveillance infrastructure, if necessary. Utilization of each WAN link ranges between 100-300 Megabits per second (Mbps). The District employs a 3 Gbps Internet connection with an average daily utilization of 1.5 Gbps, but high utilization periods exceed 2 Gbps regularly.

1.1.4 Servers - The district currently employs a distributed video surveillance server model with a minimum of one video surveillance server at each location. Six of these servers are in need of replacement, so this must be factored into any response to this Request for Proposals (RFP). Video surveillance server distribution is as follows. West Clermont High School currently has three video surveillance servers, two of which are in need of replacement. They serve 192 cameras currently with a plan to add four more cameras as part of this project. West Clermont Middle School has two video surveillance servers, both of which are in need of replacement. They serve 91 cameras currently with a plan to add six more cameras as part of this project. The single server at Holly Hill Elementary is in need of replacement. It serves 22 cameras with a plan to add 13 more cameras as part of this project. The server at Merwin Elementary needs to be replaced. It currently serves 29 cameras. As part of this project, the district would like to repurpose two servers currently in its possession to act as VMS

servers, one at the West Clermont District Office and the other at the Support Services Center. The remaining server at West Clermont High School, and each of the sole video surveillance servers at Amelia Elementary, Clough Pike Elementary, Summerside Elementary, Willowville Elementary, and Withamsville-Tobasco Elementary will be retained and incorporated into the new Milestone VMS solution. These will all need to be replaced in the next two to three years, a fact which should be considered when designing proposals for this project.

1.1.5 Site Visits - All proposers must attend at least one of two scheduled site visits to Amelia Elementary School, Holly Hill Elementary School, Withamsville-Tobasco Elementary School, the West Clermont District Office, and the District’s Support Services Center. West Clermont reserves the right to disqualify submissions from any proposer who fails to attend at least one of the two scheduled site visits at each of these five buildings. Site visits will begin at the address provided below on the following dates and times.

Day/Date:	Tuesday, December 13, 2022	Wednesday, December 14, 2022
Time:	9:00 a.m.	9:00 a.m.
Location:	4357 Ferguson Drive, Suite 200 Cincinnati, OH 45245	4357 Ferguson Drive, Suite 200 Cincinnati, OH 45245

1.1.6 Cameras - Cameras throughout the District vary by type and manufacturer.

1.1.6.1 Replacements - Cameras at Amelia Elementary and Withamsville-Tobasco Elementary are analog cameras that were converted using IP Bridges to integrate with the current IP camera ecosystem. All cameras at these two facilities need to be replaced as part of this project. These cameras are highlighted in yellow in the table found in Attachment 3 in this document. Both the current camera locations and the desired placements for new cameras for both of these schools can be found on the Maps in Attachment 4 in this document.

1.1.6.2 Retention - All other cameras in the District will be retained and must be included in the system delivered in response to this proposal. Cameras to be retained are highlighted in green on Attachment 3 in this document.

1.1.6.3 New Cameras - The manufacturer and model for all new cameras to be supplied as part of this project should be determined by proposers after completing the required site visits described in Section 1.1.5 above and learning the desired function and field of view for each placement. New interior cameras to be provided as part of this project are highlighted in red in the table found in Attachment 3 in this document. New exterior cameras to be provided as part of this project are highlighted in blue in the table found in Attachment 3 in this document. New Camera placements are identified on the maps found in Attachment 4 in this document.

1.1.7 Video Retention. Retention periods for all cameras are 14 days. All cameras to be retained by the district are H.264 compatible. Cameras should be set to record “On Motion” whenever possible to minimize required storage.

1.2 COVID-19 Protocols. When performing any of the Associated Services (defined below) under the eventual agreement with the District, the Selected Proposer shall, where possible, adhere to any social distancing or other COVID-19 mitigation requirements implemented by Board of Education policy or other orders or recommendations imposed by the health department or other jurisdiction having authority.

Article 2 — Description of the Equipment and Services

2.1 Minimum Specifications

2.1.1 Servers. For servers identified for replacement, the District will consider proposals for infrastructure that is either consolidated (all cameras stream back to server/storage at one single site within the district) or distributed (cameras for each site stream to server/storage within their local site). All new equipment provided as part of this project must have, at a minimum, a five year hardware warranty. Warranties provided by the Original Equipment Manufacturer (OEM) are preferred. Servers not identified for replacement as part of this project will remain in a distributed configuration at the completion of the project. All equipment proposed as part of this project must be rated for commercial video surveillance applications. Any proposed consolidated server infrastructure should be scalable to accommodate additional cameras as other distributed video surveillance servers within the district reach their useful lives and are retired over the next couple of years. Specifications for servers or server systems proposed should be included with the response.

2.1.2 Cameras. Axis, Hanwha, and Bosch are the preferred brands for cameras submitted as part of this project. Other brands may be considered, but contact information for references from three school districts of similar size to the District that have been using the proposed brand for a minimum of two years in a Milestone XProtect environment must be supplied with the proposal. Specifications for each camera proposed should be provided as part of the proposal. The district will evaluate camera specifications and cost as part of its decision making process. All new equipment provided as part of this project must have, at a minimum, a five year hardware warranty. Warranties provided by the Original Equipment Manufacturer (OEM) are preferred.

2.1.3 Software. Milestone XProtect Professional+ software licensing is required for all servers and cameras. Server licensing must include the new servers proposed as replacements for the six servers to be retired, as well as the eight servers to be retained by the district for continued use. Cameras to be licensed include 138 newly provided as part of this project and 503 retained for use by the district. Every proposal submitted must include line items for Milestone Care Plus coverage for all portions of the final system with options for coverage periods of one, three, and five years.

2.1.4 Personnel. All personnel performing work on this project must have undergone State and Federal criminal background checks within the twelve months preceding the award date of this project.

2.2 Associated Services. In addition to the Equipment, the District requires as part of this project specific services to be provided by the Proposer to ensure the equipment is fully functional and can be used by the District upon completion of the project. The cost for each service should be detailed on a per device basis as appropriate to the device, i.e. camera installations priced per camera, unless said service is applied to the entire project regardless of number of devices actually ordered, i.e. "Trip Charges, Delivery Labor Charge, etc."

2.2.1 Unpack and inspect each camera prior to installation and discard original packaging.

2.2.2 Record the camera manufacturer, model, Media Access Control (MAC) Address, building and installation location.

2.2.3 Install each camera provided as part of this project in its designated location using industry standard best practices for installation type and location, i.e. exterior or interior, etc. Work with representatives of the District to establish optimal camera imagery for each camera provided as a part of this project.

2.2.4 Install yellow Category 6 structured cabling, of a type and in a way appropriate to the installation location, i.e. interior or exterior, in the numbers and locations specified in Attachment 3 and Attachment 4 to connect the cameras to the nearest Intermediate Distribution Frame (IDF) location.

2.2.5 Ensure proper termination of all cabling provided in this project to industry standard best practices, including a wall mount (biscuit) box mounted on the interior of the building within 10 feet of each camera location. Where it is not possible to locate the wall mount box at an interior location within 10 feet of its associated camera, the wall mount box will be installed at the interior point nearest to the camera. A "service loop" of 15 feet should be included at the camera end of all cable runs provided as part

of this project. NOTE: All cabling will be installed above suspended ceilings or routed within cable trays (where available).

2.2.6 Remove all cameras being replaced at Amelia Elementary and Withamsville-Tobasco Elementary Schools, as identified by yellow highlighting in Attachment 3 in this document. Any holes providing cable paths from the inside of the building to these cameras that are not addressed when performing new camera installations described in 2.2.3 above should be filled using weather-proof sealant material suitable for such an application.

2.2.7 Provide personnel certified in Microsoft Windows 2019 Server to work with the District's Technology Department to install Microsoft Windows Server 2019 on all servers provided as part of this project. Ensure the District's approved minimum operating system patch levels are in place.

2.2.8 Work with the District's Technology Department to incorporate all servers into the District's Microsoft Active Directory domain.

2.2.9 Install Milestone XProtect Professional+ on all video surveillance servers provided as part of this project, as well as eight servers being retained within the district, in such a way as to provide a single, cohesive ecosystem that can be managed from a single instance of the product's user interface.

2.2.10 Connect and configure all cameras associated with this project, both new and retained, to operate within the Milestone XProtect Professional+ VMS. Name all cameras within the VMS using District supplied naming standards, and create as many as 50 custom views and/or workspaces within the VMS system to enable grouping of cameras for effective and efficient management of the VMS.

2.2.11 In collaboration with the District's Technology Department, integrate the VMS with Microsoft Active Directory (AD) such that role-based permissions are applied to users of the VMS through the use of AD group memberships.

Article 3 — Proposal Submission and Selection Process

3.1 Preparation of Proposals

3.1.1 The Proposal will include a completed Proposal Form (in the form included with this RFP as Attachment 1), and the additional materials requested in the RFP and prepared by the Proposer containing information related to the Evaluation Criteria set forth in Section 3.3.3 of this Request for Proposals (limited to 20 pages).

3.1.2 Complete all blank spaces on the Proposal Form in ink or typewritten, in words and figures, and in figures only where no space is provided for words, and sign the form. In the case of a discrepancy between the numbers and words written, the District reserves the right to consult with the Proposer and determine the correct amount.

3.1.3 In addition to the Proposal Form, provide the following information:

3.1.3.1 A description of the proposed Equipment, including all technical specifications.

3.1.3.2 A description of the Associated Services.

3.1.3.3 Per unit pricing for all Equipment and Associated Services requested in this RFP, such that the District can anticipate the total cost of all Equipment and Associated Services even should the quantity of devices be changed after bid opening but prior to an order being placed. The sole exception to this requirement is a line item that incurs a flat rate charge, such that the cost of the deliverable is not dependent upon the quantity of units ordered, i.e. Set Up Fees, and Trip Charges.

3.1.3.4 Depending on several factors, the District may have a need to modify the scope of equipment and/or services provided prior to final delivery. Responses to this RFP should include a detailed process for submission of Change Orders, as well as the amount of time needed to provide a response to the Change Order that includes impacts to timeline and total project cost.

3.1.3.5 All proposals and any invoicing submitted in connection with this project must be separated by location of installation. In the event that Equipment or Associated Services will be applied to multiple buildings within the District, that Equipment or Associated Services should be identified as “Used District-wide”.

3.1.4 Submit one complete Proposal to the District before the deadline in electronic form. The electronic copy of the Proposal shall be submitted as one PDF file, named with the Proposer’s company name + “_RFP_VMS2023”, i.e. “*BestBuy_RFP_VMS2023.pdf*”, via email to: **Larry Parece, Director of Technology**, at parece_1@my.westcler.org.

3.2 Opening of Proposals. Proposals will be accepted until the Response Deadline. Each Proposer is responsible for ensuring that its Proposal is received by the District in accordance with this Request for Proposals by the Response Deadline. The District reserves the right to accept a Proposal after the Response Deadline in its sole discretion.

3.3 Evaluation of Proposals

3.3.1 Standard of Award. The District intends to award the Contract for the Purchase to the Proposer submitting the Proposal determined to be in the District’s best interest and most advantageous to the District (the “Selected Proposer”), with price being considered, but not being the determining factor. The District reserves the right to negotiate pricing for the Purchase with the Selected Proposer.

3.3.2 Clarification of Proposals. The District reserves the right to discuss the contents of the Proposal with the Proposer and request additional information from the Proposer.

3.3.3 Evaluation Criteria. The District, in its sole discretion, will evaluate the Proposers and Proposals to determine which Proposal is in the District’s best interest and most advantageous to the District. In making such determination, the District may consider the following criteria, and any such other criteria as it determines proper:

3.3.3.1 Proposed Equipment. The District will assess all Proposers' conformity to the Minimum Specifications described in Section 2.1 using readily available, third party benchmarking software or independent research performed by the District. Where substitutions are made, the District will, in its sole discretion, determine the suitability of such substitutions in meeting the needs of the District. The district may also consider features or capabilities not strictly defined in Section 2.1, but which it deems advantageous for the equipment's intended use(s).

3.3.3.2 Proposed Associated Services. While all services listed in “Associated Services” are necessary for the success of the Project, the District may opt to forego certain services if, in its sole discretion, it determines a more favorable acquisition would ensue. The price of any service that is dependent upon the election of another line item in the response must be clearly defined, such that the district can interpret the impact of eliminating any single service on the total cost of the project.

3.3.3.3 Proposer’s History. Proposer should have a record of consistent customer satisfaction and experience in providing similar equipment and services to other **public school districts of a similar size and projects of a similar scope**. The District may consider Proposer’s prior experience on other purchases with the District.

3.3.3.4 Proposer’s Partnerships. Proposer’s partnership(s) with the original equipment manufacturer of the proposed solution.

3.3.3.5 Proposer’s Compliance Record. Proposer’s record of compliance with federal, state, and local laws, rules, and regulations, and in particular past experience with contracts using federal grant funds.

3.3.3.6 Other Essential Factors. Other essential factors, as determined by the District. This includes, but is not limited to, certifications held by specific personnel that will perform the installation and configuration of the equipment to be provided.

3.3.4 By submitting its Proposal, the Proposer agrees that District’s determination of which Proposal is in the best interest of and most advantageous to the District will be final and conclusive, and that if the Proposer, or any person at Proposer's urging, directly or indirectly challenges such determination in any legal proceeding and such challenge is not successful, Proposer will reimburse District for all legal fees and expenses incurred by District that are related to such challenge, including the cost of collection.

3.4 Negotiation of Contract

3.4.1 The District may negotiate a contract with the Selected Proposer.

3.4.2 Federal Contract Provisions. The District will pay for all or part of the contract price using federal grant funding. Accordingly, the Contract Provisions for Non-Federal Entity Contracts Under Federal Award (Attachment 2, hereto) shall apply and be incorporated into any agreement with the Selected Proposer.

3.4.3 If for any reason the District and Selected Proposer are unable to negotiate and execute the Agreement, the District may suspend negotiations with the Selected Proposer and initiate negotiations with the next Proposer determined to be in the District’s best interest and the most advantageous to the District, and so on, until the contract is fully executed, or the District rejects all Proposals.

Article 4 — Additional Instructions

4.1 Questions

4.1.1 All questions must be submitted in writing to: Larry Parece, Director of Technology, at Parece_L@my.westcler.org by 4:00 p.m. local time on December 16, 2022. All questions and answers will be emailed on or about December 20, 2022 to all individuals and firms that attended the mandatory site visits outlined in 1.1.5 above.

4.1.2 The District may also email other related information to the individuals and firms that were provided with a copy of the Request for Proposals.

4.1.3 Addenda

4.1.3.1 Should any question prompt the District to amend the Request for Proposal, a notice will be sent to all individuals and firms that were provided with a copy of the Request for Proposals. Addenda will be deemed to have been validly given if emailed or otherwise furnished to each Proposer’s contact person of record.

4.1.3.2 When an Addendum to this Request for Proposal is necessary less than three days before the Proposal deadline, the District may extend the Proposal deadline through an announcement via email. The District will make reasonable attempts to contact all necessary individuals.

4.2 Proposal Certifications. By submitting a Proposal, the Proposer certifies to the District that:

4.2.1 the Proposer has carefully reviewed the Contract Documents to become familiar with the requirements for the Purchase and has included all costs necessary to provide labor and materials for the Purchase in its Proposal, including incidentals, whether or not specifically called for in the Contract Documents and to become familiar with the limitations and conditions related to the Purchase covered by the Proposal and has included in the Proposal a sum to cover the cost of such items;

4.2.2 the Proposer is not the subject of an unresolved finding for recovery issued by the Auditor of State under ORC Section 9.24;

4.2.3 the Proposer is not debarred under ORC Section 153.02;

4.2.4 the Proposer has not been found by a court to be in default of a judgment or breach of settlement agreement; and

4.2.5 the Proposer has not violated ORC Section 3517.102 by exceeding allowable campaign contributions.

4.3 Cancellation and Rejection; Waiver of Minor Irregularities

4.3.1 The District may reject all Proposals and cancel all or any portion of this solicitation at any time for any reason. The District will have no liability to any Proposer arising out of any cancellation of this solicitation or rejection of any related submission.

4.3.2 The District shall reject a Proposal if the District determines that:

4.3.2.1 the Contract cannot be awarded under ORC Section 9.24 because the recommended Proposer has a finding for recovery issued by the Auditor of State, and the finding for recovery is unresolved;

4.3.2.2 the recommended Proposer is debarred under ORC Section 153.02;

4.3.2.3 the recommended Proposer has violated ORC Section 3517.102 by exceeding allowable campaign contributions; or

4.3.2.4 the District has determined that the Proposer intended to engage in collusion with intent to defraud or other illegal practices.

4.3.3 The District may waive minor irregularities in its sole discretion.

4.4 Proposal Revision. The District may request a Proposer submit a revised Proposal to clarify any questions which may arise while evaluating the Proposals. If the District requests a clarification of any Proposal, the Proposer must submit the clarification in writing to the District within 3 business days.

4.5 Proposal Withdrawal. If the Selected Proposer withdraws its proposal after selection, the District may award the Contract to the firm next determined to be in the District's best interest and most advantageous to the District.

4.6 Applicable Law and Forum. The rights of any Proposer or any party to a subsequent Agreement shall be governed by Ohio law, and only the Court of Common Pleas of Clermont County shall have jurisdiction over any action or proceeding related to the Proposal or any subsequent Agreement. The Proposer irrevocably consents to that jurisdiction.

4.7 Public Records. Pursuant to ORC Section 9.28, documents submitted to the District in response to this Request for Proposal will not be available for public inspection under ORC Section 149.43 until after the District either enters into a contract for the Purchase or cancels this Request for Proposals.

Attachment 1

Proposal Form

Proposer's Name: _____

Proposer's Address: _____

Principal Contact: _____

Telephone Number: _____

Email Address: _____

Federal Tax ID Number: _____

Date Submitted: _____

Article 1 — Pricing Proposal

1.1 Equipment Pricing

The Proposer will provide a complete list of items necessary to provide a fully functional VMS

\$ _____ per [UNIT]

1.2 Associated Services Pricing

The Proposer will provide the following Associated Services for the following pricing:

1.2.1 Unpack each [EQUIPMENT] at Proposer's facility and discard original packaging.

\$ _____ Per [UNIT] OR Lump Sum

1.2.2 Affix matching, district-provided asset tags to each [EQUIPMENT].

\$ _____ Per [UNIT] OR Lump Sum

1.2.3 Configure each [EQUIPMENT] to...

\$ _____ Per [UNIT] OR Lump Sum

1.2.4 Pack each [EQUIPMENT] into a ...

\$ _____ Per [UNIT] OR Lump Sum

1.2.5 Provide an adequate quantity of volume packaging (bins or boxes), suitable for holding [# UNITS] of [EQUIPMENT] such that all [EQUIPMENT] in the order can be delivered to the District in volume packaged lots of [# UNITS] per package.

\$ _____ Per [UNIT] OR Lump Sum

1.2.6 Store all [EQUIPMENT] included in this project until such time as the District is prepared to take delivery of them.

\$ _____ Per [UNIT] OR Lump Sum

1.2.7 Deliver [EQUIPMENT] on a date and in quantities to be determined no later than [DATE] to [LOCATION(s)].

\$ _____ Per [UNIT] OR Lump Sum

Article 2 — Addenda

2.1 Receipt of the following Addenda is hereby acknowledged:

Addendum No.	_____	Date:	_____
Addendum No.	_____	Date:	_____
Addendum No.	_____	Date:	_____

Article 3 — Proposer’s Certifications

3.1 Proposer hereby acknowledges that the following representations in this Proposal are material and not mere recitals:

3.1.1 Proposer has read and understands the Contract Documents and agrees to comply with all requirements of the Contract Documents.

3.1.2 Proposer represents that the Proposal is based upon the Contract Documents, including but not limited to any drawings and specifications provided.

3.1.3 Proposer has become familiar with local conditions and has correlated personal observations about the requirements of the Contract Documents. Proposer has no outstanding questions regarding the interpretation of the Contract Documents based upon what it has observed and could reasonably have been expected to have observed.

3.1.4 Proposer and each person signing on behalf of Proposer certify, and in the case of a joint or combined proposal, each party thereto certifies as to such party’s organization, under penalty of perjury, that to the best of the undersigned’s knowledge and belief:

3.1.4.1 the Proposal amount, any Unit Prices and any Alternate items in the Proposal have been arrived at independently without collusion, consultation, communication or agreement, for the purpose of restricting competition as to any matter relating to such Base Proposal, Unit Prices or Alternate Items with any other Proposer;

3.1.4.2 unless otherwise required by law, the Proposal amount, any Unit Prices and any Alternate items in the Proposal have not been knowingly disclosed by the Proposer and will not knowingly be disclosed by the Proposer prior to the proposal opening, directly or indirectly, to any other Proposer who would have any interest in the Proposal amount, Unit Prices or Alternate items; and

3.1.4.3 no attempt has been made or will be made by the Proposer to induce any other individual, partnership or corporation to submit or not to submit a proposal for the purpose of restricting competition.

3.1.4.4 the Proposer is not the subject of an unresolved finding for recovery issued by the Auditor of State under ORC Section 9.24 or that Proposer has taken the appropriate remedial steps required under Section 9.24, ORC, or otherwise qualifies under this section;

3.1.4.5 the Proposer is not debarred under ORC Section 153.02;

3.1.4.6 the Proposer has not been found by a court to be in default of a judgment or breach of settlement agreement; and

3.1.4.7 the Proposer has not violated ORC Section 3517.102 by exceeding allowable campaign contributions.

3.1.5 Proposer will enter into and execute the Agreement with the District, if an Agreement is awarded on the basis of this Proposal.

3.1.6 Proposer certifies that upon the award of an Agreement, the Proposer will make a good faith effort to ensure that all of the Proposer's employees, while working on the site of the Project, will not purchase, transfer, use or possess illegal drugs or alcohol or abuse prescription drugs in any way.

3.1.7 Proposer agrees to furnish any information requested by the District to evaluate the experience, resources, and qualifications of the Proposer.

Signed and Submitted:

Proposer's Name

By: _____
Signature

Printed Name & Title

Date

Attachment 2

Contract Provisions for Non-Federal Entity Contracts under Federal Awards

The Education Department of General Administrative Regulations (EDGAR) are the federal regulations that govern all federal grants awarded by the U.S. Department of Education on or after December 26, 2014 to local districts (LEAs) and charters including State-administered programs. All recipients of federal grant dollars must comply with these rules. All provisions provided below are hereby incorporated by reference into the Owner-Contractor Agreement (“Agreement”) and by entering into this Agreement, Contractor certifies the following:

Appendix II to Part 200 Contract Provisions for Non-Federal Entity Contracts Under Federal Awards

(A) Contracts for more than the simplified acquisition threshold, currently set at \$250,000, which is the inflation adjusted amount determined by the Civilian Agency Acquisition Council and the Defense Acquisition Regulations Council (Councils) as authorized by 41 U.S.C. 1908, must address administrative, contractual, or legal remedies in instances where contractors violate or breach contract terms, and provide for such sanctions and penalties as appropriate.

Pursuant to Rule (A) above, the Owner reserves all rights and privileges under the applicable laws and regulations with respect to this procurement process in the event of breach of contract by either party.

(B) All contracts in excess of \$10,000 must address termination for cause and for convenience by the non-Federal entity including the manner by which it will be effected and the basis for settlement.

Pursuant to Rule (B) above, Owner reserves the right to terminate any agreement resulting from this procurement process pursuant to Article 10 of the Owner-Contractor Agreement.

(C) Equal Employment Opportunity. Except as otherwise provided under 41 CFR Part 60, all contracts that meet the definition of “federally assisted construction contract” in 41 CFR Part 60-1.3 must include the equal opportunity clause provided under 41 CFR 60-1.4(b), in accordance with Executive Order 11246, “Equal Employment Opportunity” (30 FR 12319, 12935, 3 CFR Part, 1964-1965 Comp., p. 339), as amended by Executive Order 11375, “Amending Executive Order 11246 Relating to Equal Employment Opportunity,” and implementing regulations at 41 CFR part 60, “Office of Federal Contract Compliance Programs, Equal Employment Opportunity, Department of Labor.”

Pursuant to Rule (C) above, this provision is hereby incorporated by reference into the Agreement.

(D) Davis-Bacon Act, as amended (40 U.S.C. 3141-3148). When required by Federal program legislation, all prime construction contracts in excess of \$2,000 awarded by non-Federal entities must include a provision for compliance with the Davis-Bacon Act (40 U.S.C. 3141-3144, and 3146-3148) as supplemented by Department of Labor regulations (29 CFR Part 5, “Labor Standards Provisions Applicable to Contracts Covering Federally Financed and Assisted Construction”). In accordance with the statute, contractors must be required to pay wages to laborers and mechanics at a rate not less than the prevailing wages specified in a wage determination made by the Secretary of Labor. In addition, contractors must be required to pay wages not less than once a week. The non-Federal entity must place a copy of the current prevailing wage determination issued by the Department of Labor in each solicitation. The decision to award a contract or subcontract must be conditioned upon the acceptance of the wage determination. The non-Federal entity must report all suspected or reported violations to the Federal awarding agency. The contracts must also include a provision for compliance with the Copeland “Anti-Kickback” Act (40 U.S.C. 3145), as supplemented by Department of Labor regulations (29 CFR Part 3, “Contractors and Subcontractors on Public Building or Public Work Financed in Whole or in Part by Loans or Grants from the United States”). The Act provides that each contractor or subrecipient must be prohibited from inducing, by any means, any person employed in the construction, completion, or repair of public work, to give up any part of the compensation to which he or she

is otherwise entitled. The non-Federal entity must report all suspected or reported violations to the Federal awarding agency.

Pursuant to Rule (D) above, Contractor will follow all applicable Davis-Bacon Act provisions.

(E) Contract Work Hours and Safety Standards Act (40 U.S.C. 3701-3708). Where applicable, all contracts awarded by the non-Federal entity in excess of \$100,000 that involve the employment of mechanics or laborers must include a provision for compliance with 40 U.S.C. 3702 and 3704, as supplemented by Department of Labor regulations (29 CFR Part 5). Under 40 U.S.C. 3702 of the Act, each contractor must be required to compute the wages of every mechanic and laborer on the basis of a standard work week of 40 hours. Work in excess of the standard work week is permissible provided that the worker is compensated at a rate of not less than one and a half times the basic rate of pay for all hours worked in excess of 40 hours in the work week. The requirements of 40 U.S.C. 3704 are applicable to construction work and provide that no laborer or mechanic must be required to work in surroundings or under working conditions which are unsanitary, hazardous or dangerous. These requirements do not apply to the purchases of supplies or materials or articles ordinarily available on the open market, or contracts for transportation or transmission of intelligence.

Pursuant to Rule (E) above, Contractor certifies that Contractor will follow all applicable provisions of the Contract Work Hours and Safety Standards Act during the term of the Agreement.

(F) Rights to Inventions Made Under a Contract or Agreement. If the Federal award meets the definition of “funding agreement” under 37 CFR § 401.2 (a) and the recipient or subrecipient wishes to enter into a contract with a small business firm or nonprofit organization regarding the substitution of parties, assignment or performance of experimental, developmental, or research work under that “funding agreement,” the recipient or subrecipient must comply with the requirements of 37 CFR Part 401, “Rights to Inventions Made by Nonprofit Organizations and Small Business Firms Under Government Grants, Contracts and Cooperative Agreements,” and any implementing regulations issued by the awarding agency.

Pursuant to Rule (F) above, Contractor certifies that during the term of the Agreement, Contractor agrees to comply with all applicable requirements referenced in Rule (F) above.

(G) Clean Air Act (42 U.S.C. 7401-7671q.) and the Federal Water Pollution Control Act (33 U.S.C. 1251-1387), as amended - Contracts and subgrants of amounts in excess of \$150,000 must contain a provision that requires the non-Federal award to agree to comply with all applicable standards, orders or regulations issued pursuant to the Clean Air Act (42 U.S.C. 7401-7671q) and the Federal Water Pollution Control Act as amended (33 U.S.C. 1251-1387). Violations must be reported to the Federal awarding agency and the Regional Office of the Environmental Protection Agency (EPA).

Pursuant to Rule (G) above, Contractor certifies that during the term of the Agreement, Contractor agrees to comply with all applicable requirements as referenced in Rule (G) above.

(H) Debarment and Suspension (Executive Orders 12549 and 12689) - A contract award (see 2 CFR 180.220) must not be made to parties listed on the government wide exclusions in the System for Award Management (SAM), in accordance with the OMB guidelines at 2 CFR 180 that implement Executive Orders 12549 (3 CFR part 1986 Comp., p. 189) and 12689 (3 CFR part 1989 Comp., p. 235), “Debarment and Suspension.” SAM Exclusions contains the names of parties debarred, suspended, or otherwise excluded by agencies, as well as parties declared ineligible under statutory or regulatory authority other than Executive Order 12549.

Pursuant to Rule (H) above, Contractor certifies that neither it nor its principals is presently debarred, suspended, proposed for debarment, declared ineligible, or voluntarily excluded from participation by any federal department or agency.

(I) Byrd Anti-Lobbying Amendment (31 U.S.C. 1352) - Contractors that apply or bid for an award exceeding \$100,000 must file the required certification. Each tier certifies to the tier above that it will not and has not used Federal appropriated funds to pay any person or organization for influencing or attempting to influence an officer or employee of any agency, a member of Congress, officer or employee of Congress, or an employee of a member of Congress in connection with obtaining any Federal contract, grant or any other award covered by 31 U.S.C. 1352. Each tier must also disclose any lobbying with non-Federal funds that takes place in connection with obtaining any Federal award. Such disclosures are forwarded from tier to tier up to the non-Federal award.

Pursuant to Rule (I) above, as applicable, Contractor agrees to file all certifications and disclosures required by, and otherwise comply with, the Byrd Anti-Lobbying Amendment (31 USC 1352).

Record Retention Requirements

Contractor certifies that during the term of the Agreement, Contractor will comply with the record retention requirements detailed in 2 CFR § 200.333. The Contractor further certifies that all records will be retained as required by 2 CFR § 200.333 for a period of three years after grantees or subgrantees submit final expenditure reports or quarterly or annual financial reports, as applicable, and all other pending matters are closed.

Energy Policy and Conservation Act Compliance

To the extent applicable, Contractor certifies that during the term of the Agreement, Contractor will comply with the mandatory standards and policies relating to energy efficiency which are contained in the state energy conservation plan issued in compliance with the Energy Policy and Conservation Act.

Buy American Provisions Compliance

To the extent Contractor has agreed to comply with applicable provisions of the Buy American Act with a particular public entity, Contractor certifies that Contractor is in compliance with all applicable provisions of the Buy American Act. Purchases made in accordance with the Buy American Act shall follow the applicable procurement rules calling for free and open competition.

Recovered Materials (2 C.F.R. § 200.322)

Contractor agrees to the extent practical it complies with section 6002 of the Solid Waste Disposal Act, as amended by the Resource Conservation and Recovery Act.

Access to Records (2 C.F.R. § 200.336)

Contractor agrees that duly authorized representatives of the Agency shall have access to any books, documents, papers and records of Contractor that are directly pertinent to Contractor's discharge of its obligations under the Contract for the purpose of making audits, examinations, excerpts, and transcriptions. The right also includes timely and reasonable access to Contractor's personnel for the purpose of interview and discussion relating to such documents.

Prohibition on Certain Telecommunications and Video Surveillance Services or Equipment

Contractor, nor its subcontractors shall provide or install equipment, services, or systems that uses "covered telecommunications equipment or services" as a substantial or essential component of any system, or as critical technology as part of any system. As described in Public Law 115-232, section 889, "covered telecommunications equipment" is telecommunications equipment produced by Huawei Technologies

Company or ZTE Corporation (or any subsidiary or affiliate of such entities); video surveillance and telecommunications equipment produced by Hytera Communications Corporation, Hangzhou Hikvision Digital Technology Company, or Dahua Technology Company (or any subsidiary or affiliate of such entities); telecommunications or video surveillance services provided by such entities or using such equipment; or telecommunications or video surveillance equipment or services produced or provided by an entity that the Secretary of Defense, in consultation with the Director of the National Intelligence or the Director of the Federal Bureau of Investigation, reasonably believes to be an entity owned or controlled by, or otherwise connected to, the government of a covered foreign country.

Complying with Federal, State, and Local Laws

Contractor agrees to comply with federal, state, and local laws, rules, regulations, and ordinances, as applicable. It is further acknowledged that Contractor certifies compliance with provisions, laws, acts, regulations, etc. as noted above.

Energy Conservation (34 C.F.R. § 75.616(c))

Contractor agrees to comply with US Department of Education regulation at 34 CFR 75.616(c) which requires the use of American Society of Heating, Refrigeration and Air Conditioning Engineers (ASHRAE) standards for Heating, Ventilation, and Air Conditioning (HVAC) projects.

Domestic Preference (2 C.F.R. § 200.322)

Contractor agrees to comply with the requirements for Domestic Preference in construction materials and supplies where applicable (2 CFR 200.322).

Assurances for Construction and Other Capital Expenditures

Contractor agrees that the project will begin in a reasonable time period and Contractor will have the final plans approved before the construction is advertised or placed on the market for bidding (34 CFR 75.605). Contractor agrees the project will be completed in a reasonable time period consistent with the approved plans and specification (34 CFR 75.606). Contractor represents that the proposed construction is functional, economical, and not elaborate in design or extravagant in the use of materials as compared to other facilities in the State or other applicable geographic area (34 CFR § 75.607).

Preservation of Historic Sites (34 CFR § 75.602)

Contractor represents it has considered the probable effects of proposed construction on any district, site, building, or structure that is included or eligible for inclusion in the National Register of Historic Places.

Health, Safety, and Disability Compliance (34 CFR §§75.609 and 75.610)

Contractor represents that it has reviewed the plans and designs for the improvement against Federal, State, and local health standards including Federal requirements regarding access by persons with disabilities, and it confirms project plans and designs comply with applicable Federal, State and local health and safety standards, as well as Federal requirements regarding access by persons with disabilities, as required by (34 CFR §§75.609 and 75.610). This certification shall be effective through the term of the Contractor's Agreement.

Attachment 3					
Cameras to be Removed, Retained, and Added					
Legend					
	= Remove				
	= New Interior				
	= New Exterior				
Building	Camera Name	Type	Model	Firmware	Resolution
Amelia Elem	Back of Building	AXIS VAPIX	M7016		
Amelia Elem	Back Stairwell	AXIS VAPIX	M7016		
Amelia Elem	Bottom of Stairwell	AXIS VAPIX	M7016		
Amelia Elem	Bottom of Stairwell	AXIS VAPIX	M7016		
Amelia Elem	Cafeteria	AXIS VAPIX	M7016		
Amelia Elem	Cafeteria 2	AXIS VAPIX	M7016		
Amelia Elem	Cafeteria Entrance	AXIS VAPIX	M7016		
Amelia Elem	Courtyard	AXIS VAPIX	M7016		
Amelia Elem	Drive Up Circle	AXIS VAPIX	M7016		
Amelia Elem	Elevator	AXIS VAPIX	M7016		
Amelia Elem	Fence Line	AXIS VAPIX	M7016		
Amelia Elem	Front Entrance-Foyer	AXIS VAPIX	M7016		
Amelia Elem	Front Entrance-Hallway	AXIS VAPIX	M7016		
Amelia Elem	Gym	AXIS VAPIX	M7016		
Amelia Elem	GYM 2	AXIS VAPIX	M7016		
Amelia Elem	Hall 1	AXIS VAPIX	M7016		
Amelia Elem	HALL 10	AXIS VAPIX	M7016		
Amelia Elem	HALL 11	AXIS VAPIX	M7016		
Amelia Elem	Hall 2	AXIS VAPIX	M7016		
Amelia Elem	Hall 3 by stairwell	AXIS VAPIX	M7016		
Amelia Elem	Hall 4	AXIS VAPIX	M7016		
Amelia Elem	HALL 5	AXIS VAPIX	M7016		
Amelia Elem	HALL 6	AXIS VAPIX	M7016		
Amelia Elem	HALL 7	AXIS VAPIX	M7016		
Amelia Elem	HALL 8	AXIS VAPIX	M7016		
Amelia Elem	HALL 9	AXIS VAPIX	M7016		
Amelia Elem	Hall by Restrooms	AXIS VAPIX	M7016		
Amelia Elem	Hall by restrooms	AXIS VAPIX	M7016		
Amelia Elem	HVAC Gate	AXIS VAPIX	M7016		
Amelia Elem	N/A	AXIS VAPIX	M7016		
Amelia Elem	Outside Entry	AXIS VAPIX	M7016		
Amelia Elem	Parking Lot	AXIS VAPIX	M7016		
Amelia Elem	Picnic Table	AXIS VAPIX	M7016		
Amelia Elem	Playground	AXIS VAPIX	M7016		
Amelia Elem	Playground 2	AXIS VAPIX	M7016		
Amelia Elem	Rear Gate	AXIS VAPIX	M7016		
Amelia Elem	Serving Line	AXIS VAPIX	M7016		
Amelia Elem	Student Drop Off	AXIS VAPIX	M7016		
Amelia Elem	Top of Stairwell	AXIS VAPIX	M7016		
Amelia Elem	VESTIBULE	AXIS VAPIX	M7016		
Amelia Elem	1				
Amelia Elem	2				

Amelia Elem		3				
Amelia Elem		4				
Amelia Elem		5				
Amelia Elem		6				
Amelia Elem		7				
Amelia Elem		8				
Amelia Elem		9				
Amelia Elem		10				
Amelia Elem		11				
Amelia Elem		12				
Amelia Elem		13				
Amelia Elem		14				
Amelia Elem		15				
Amelia Elem		16				
Amelia Elem		17				
Amelia Elem		18				
Amelia Elem		19				
Amelia Elem		20				
Amelia Elem		21				
Amelia Elem		22				
Amelia Elem		23				
Amelia Elem		24				
Amelia Elem		25				
Amelia Elem		26				
Amelia Elem		27				
Amelia Elem		28				
Amelia Elem		29				
Amelia Elem		30				
Amelia Elem		31				
Amelia Elem		32				
Amelia Elem		33				
Amelia Elem		34				
Amelia Elem		35				
Amelia Elem		36				
Amelia Elem		37				
Amelia Elem		38				
Amelia Elem		39				
Amelia Elem		40				
Amelia Elem		41				
Amelia Elem		42				
Amelia Elem		43				
Amelia Elem		44				
Amelia Elem		45				
Amelia Elem		46				
Amelia Elem		47				
Amelia Elem		48				
Clough Pike Elem	001-Exterior Facing Basketball	Samsung	QNV-7080R	2.04_181115	2592x1520	
Clough Pike Elem	002-Exterior Facing Playgroun	Samsung	QNV-7080R	2.04_181115	2592x1520	
Clough Pike Elem	003-Exterior Rear Playground	Samsung	QNV-7080R	2.04_181115	2592x1520	
Clough Pike Elem	004-Exterior Rear Sidewalk	Samsung	QNV-7080R	2.04_181115	2592x1520	

Clough Pike Elem	005-Exterior Rear Sidewalk	Samsung	QNV-7080R	2.04_181115	2592x1520
Clough Pike Elem	006-Exterior Rear Sidewalk	Samsung	QNV-7080R	2.04_181115	2592x1520
Clough Pike Elem	007-Exterior Rear Sidewalk an	Samsung	QNV-7080R	2.04_181115	2592x1520
Clough Pike Elem	008-Exterior Rear Play Area	Samsung	QNV-7080R	2.04_181115	2592x1520
Clough Pike Elem	009-Exterior Rear Sidewalk an	Samsung	QNV-7080R	2.04_181115	2592x1520
Clough Pike Elem	10-Exterior Side Drive and Par	Samsung	QNV-7080R	2.04_181115	2592x1520
Clough Pike Elem	101-Hallway by Room 106	Samsung	QND-7080R	2.04_181115	2592x1520
Clough Pike Elem	102-Hallway by Room 102	Samsung	QND-7080R	2.04_181115	2592x1520
Clough Pike Elem	103- Hallway by Room 103	Samsung	QND-7080R	2.04_181115	2592x1520
Clough Pike Elem	104-Main Hallway by Office	Samsung	QND-7080R	2.04_181115	2592x1520
Clough Pike Elem	105- Main Hallway by Office	Samsung	QND-7080R	2.04_181115	2592x1520
Clough Pike Elem	106-Hallway Exit by Music Roc	Samsung	QND-7080R	2.11_200110	2592x1520
Clough Pike Elem	107-Hallway by Room 98	Samsung	QND-7080R	2.04_181115	2592x1520
Clough Pike Elem	108-Cafe	Samsung	QND-7080R	2.04_181115	2592x1520
Clough Pike Elem	109-Cafe	Samsung	QND-7080R	2.04_181115	2592x1520
Clough Pike Elem	11-Exterior Side Drive	Samsung	QNV-7080R	2.04_181115	2592x1520
Clough Pike Elem	110-Cafe	Samsung	QND-7080R	2.04_181115	2592x1520
Clough Pike Elem	111-Cafe	Samsung	QND-7080R	2.04_181115	2592x1520
Clough Pike Elem	112-Kitchen	Samsung	QND-7080R	2.04_181115	2592x1520
Clough Pike Elem	113-Kitchen	Samsung	QND-7080R	2.04_181115	2592x1520
Clough Pike Elem	114-Hallway by Stage Stairs	Samsung	QND-7080R	2.04_181115	2592x1520
Clough Pike Elem	115-Hallway by Room 200	Samsung	QND-7080R	2.04_181115	2592x1520
Clough Pike Elem	116-Main Office	Samsung	QND-7080R	2.04_181115	2592x1520
Clough Pike Elem	117-Main Vestibule	Samsung	QND-7080R	2.04_181115	2592x1520
Clough Pike Elem	118-Hallway Behind Cafe	Samsung	QND-7080R	2.04_181115	2592x1520
Clough Pike Elem	119-Hallway by Room 201	Samsung	QND-7080R	2.04_181115	2592x1520
Clough Pike Elem	12-Exterior Side Play Area	Samsung	QNV-7080R	2.04_181115	2592x1520
Clough Pike Elem	121-Hallway by Room 204	Samsung	QND-7080R	2.04_181115	2592x1520
Clough Pike Elem	122-Hallway Facing Gym Entra	Samsung	QND-7080R	2.11_200110	2592x1520
Clough Pike Elem	123-Gym Entrance and Exteric	Samsung	QND-7080R	2.04_181115	2592x1520
Clough Pike Elem	124-Gym	Samsung	QND-7080R	2.11_200110	2592x1520
Clough Pike Elem	125-Gym	Samsung	QND-7080R	2.11_200110	2592x1520
Clough Pike Elem	126-Hallway by Room 307	Samsung	QND-7080R	2.04_181115	2592x1520
Clough Pike Elem	127-Hallway by Room 303	Samsung	QND-7080R	2.04_181115	2592x1520
Clough Pike Elem	128-Media Center	Samsung	QND-7080R	2.04_181115	2592x1520
Clough Pike Elem	13-Exterior Side Play Area	Samsung	QNV-7080R	2.04_181115	2592x1520
Clough Pike Elem	14-Exterior Side Playground	Samsung	QNV-7080R	2.04_181115	2592x1520
Clough Pike Elem	15- Exterior Side Parking	Samsung	QNV-7080R	2.04_181115	2592x1520
Clough Pike Elem	16-Exterior Front Parking and	Samsung	QNV-7080R	2.04_181115	2592x1520
Clough Pike Elem	17-Exterior Parking and Entrar	Samsung	QNV-7080R	2.04_181115	2592x1520
Clough Pike Elem	18-Exterior Front Parking and	Samsung	QNV-7080R	2.04_181115	2592x1520
Clough Pike Elem	19-Exterior Front Parking	Samsung	QNV-7080R	2.04_181115	2592x1520
Clough Pike Elem	QND-7080R	Samsung	QND-7080R	2.04_181115	2592x1520
Holly Hill	Basketball Court	HikVision	DS-2CD2112-I	V5.4.0 Build build 160530	1280x720
Holly Hill	Cafeteria 1	HikVision	DS-2CD2112F-I	V5.4.0 Build build 160530	1280x960
Holly Hill	Cafeteria 2	HikVision	DS-2CD2112-I	V5.4.0 Build build 160530	1280x960
Holly Hill	Custodian Entrance	HikVision	DS-2CD2112-I	V5.4.0 Build build 160530	1280x720
Holly Hill	Front Parking Lot	HikVision	DS-2CD2112-I	V5.4.0 Build build 160530	1280x960
Holly Hill	Gym 1	HikVision	DS-2CD2142FWD-IS	V5.5.0 Build build 170725	2688x1520
Holly Hill	Gym 2	HikVision	DS-2CD2142FWD-IS	V5.5.0 Build build 170725	2688x1520

Holly Hill	Library Hall	HikVision	DS-2CD2112-I	V5.4.0 Build build 160530	1280x720
Holly Hill	Main Entrance Canopy	HikVision	DS-2CD2112-I	V5.4.0 Build build 160530	1280x720
Holly Hill	Main Entrance Interior	HikVision	DS-2CD2112-I	V5.4.0 Build build 160530	1280x720
Holly Hill	Main Office	HikVision	DS-2CD2112-I	V5.4.0 Build build 160530	1280x960
Holly Hill	Playground	HikVision	DS-2CD2142FWD-IS	V5.5.0 Build build 170725	2688x1520
Holly Hill	Rear Exterior Door	HikVision	DS-2CD2142FWD-IS	V5.5.5 Build build 180111	2688x1520
Holly Hill	Restrooms By Media Room	HikVision	DS-2CD2112-I	V5.4.0 Build build 160530	1280x720
Holly Hill	Room 1 Hallway	HikVision	DS-2CD2112-I	V5.4.0 Build build 160530	1280x720
Holly Hill	Room 10 Hallway	HikVision	DS-2CD2112-I	V5.4.0 Build build 160530	1280x960
Holly Hill	Room 15 Hallway	HikVision	DS-2CD2112-I	V5.4.0 Build build 160530	1280x720
Holly Hill	Room 18 Hallway	HikVision	DS-2CD2112-I	V5.4.0 Build build 160530	1280x960
Holly Hill	Room 21 Hallway	HikVision	DS-2CD2112-I	V5.4.0 Build build 160530	1280x720
Holly Hill	Room 30 Hallway	HikVision	DS-2CD2112-I	V5.4.0 Build build 160530	1280x720
Holly Hill	Room 5 Hallway	HikVision	DS-2CD2112-I	V5.4.0 Build build 160530	1280x720
Holly Hill	Side Parking Lot	Samsung	XNV-8082R	2.10.01_20210708_R304	3328x1872
Holly Hill	1				
Holly Hill	2				
Holly Hill	3				
Holly Hill	4				
Holly Hill	5				
Holly Hill	6				
Holly Hill	7				
Holly Hill	8				
Holly Hill	9				
Holly Hill	10				
Holly Hill	11				
Holly Hill	12				
Holly Hill	13				
Merwin Elem	Breezeway	AXIS VAPIX	P3225-LVE Mk II	8.40.1	1920x1080
Merwin Elem	Flag Pole	Sony	SNC-EM642R	3.1.1	1920x1080
Merwin Elem	Front	Sony	SNC-XM632	2.8.0	1920x1080
Merwin Elem	Front Modular Entrance	Sony	SNC-EM642R	3.1.1	1920x1080
Merwin Elem	Front Modular Front Lot	AXIS VAPIX	P3367	6.50.5.6	2592x1944
Merwin Elem	Front Modular Side Lot	AXIS VAPIX	P3367	6.50.5.6	2592x1944
Merwin Elem	Front Parking Lot	Sony	SNC-EM642R	3.1.1	1920x1080
Merwin Elem	Gym Left Side Stage	Sony	SNC-EM642R	3.1.1	1920x1080
Merwin Elem	Gym Right Side Stage	Sony	SNC-EM642R	3.1.1	1920x1080
Merwin Elem	Hallway A	Sony	SNC-EM630	2.8.0	1920x1080
Merwin Elem	Hallway B	Sony	SNC-EM630	2.8.0	1920x1080
Merwin Elem	Hallway C	Sony	SNC-EM630	2.8.0	1920x1080
Merwin Elem	Hallway D	Sony	SNC-EM630	2.8.0	1920x1080
Merwin Elem	Inside Front Entrance	Sony	SNC-XM631	2.8.0	1920x1080
Merwin Elem	New Wing	Sony	SNC-EM630	2.8.0	1920x1080
Merwin Elem	North Driveway	AXIS VAPIX	P3225-LVE Mk II	8.40.1	1920x1080
Merwin Elem	Office	Sony	SNC-XM631	2.8.0	1920x1080
Merwin Elem	Outside Door B	AXIS VAPIX	M3057	8.40.3	2048x2048
Merwin Elem	Outside Door C	AXIS VAPIX	M3057	8.40.3	2048x2048
Merwin Elem	Outside Door D	AXIS VAPIX	P3225-LVE Mk II	8.40.1	1920x1080
Merwin Elem	Outside Door E	AXIS VAPIX	P3225-LVE Mk II	8.40.1	1920x1080
Merwin Elem	Outside Door H	AXIS VAPIX	P3225-LVE Mk II	8.40.1	1920x1080

Merwin Elem	Outside Hall C South	AXIS VAPIX	P3367	6.50.1.3	2592x1944
Merwin Elem	Outside Hall D South	AXIS VAPIX	P3375-VE	7.25.1.1	1920x1080
Merwin Elem	Playground West	Sony	SNC-EM642R	3.1.1	1920x1080
Merwin Elem	Rear Left Side Entrance	Sony	SNC-XM631	2.8.0	1920x1080
Merwin Elem	Rear Modular A" Playground"	AXIS VAPIX	P3367	6.50.5.6	2592x1944
Merwin Elem	Rear Modular B" Playground"	AXIS VAPIX	P3367	6.50.5.6	2592x1944
Merwin Elem	Recess Hallway	Sony	SNC-XM631	2.8.0	1920x1080
Summerside Elem	1st floor ELA 140	Samsung	QND-7080R	2.02_180612	2592x1520
Summerside Elem	Art Hallway by Room 260 Faci	Samsung	QND-7080R	2.02_180612	2592x1520
Summerside Elem	Art Hallway by Room 261	Samsung	QND-7080R	2.02_180612	2592x1520
Summerside Elem	Cafeteria	Samsung	QND-7080R	2.02_180612	2592x1520
Summerside Elem	Cafeteria	Samsung	QND-7080R	2.02_180612	2592x1520
Summerside Elem	Cafeteria Entrance	Samsung	QND-7080R	2.02_180612	2592x1520
Summerside Elem	Custodial Room	Samsung	QND-7080R	2.04_181115	2592x1520
Summerside Elem	ELA 140 and Hallway	Samsung	QND-7080R	2.02_180612	2592x1520
Summerside Elem	ELA 240	Samsung	QND-7080R	2.04_181115	2592x1520
Summerside Elem	ELA 240	Samsung	QND-7080R	2.04_181115	2592x1520
Summerside Elem	ELA 240	Samsung	QND-7080R	2.04_181115	2592x1520
Summerside Elem	ELA 240	Samsung	QND-7080R	2.04_181115	2592x1520
Summerside Elem	ELA 240	Samsung	QND-7080R	2.02_180612	2592x1520
Summerside Elem	ELA 241	Samsung	QND-7080R	2.02_180612	2592x1520
Summerside Elem	Entrance near Cafe	Samsung	QND-7080R	2.02_180612	2592x1520
Summerside Elem	Exterior - Admin Entrance	Samsung	QNV-7080R	2.04_181115	2592x1520
Summerside Elem	Exterior - Back Entrance	Samsung	QNV-7080R	2.04_181115	2592x1520
Summerside Elem	Exterior - Corner Yard	Samsung	QNV-7080R	2.04_181115	2592x1520
Summerside Elem	Exterior - Front Entrance Sidev	Samsung	QNV-7080R	2.04_181115	2592x1520
Summerside Elem	Exterior - Front Parking	Samsung	QNV-7080R	2.04_181115	2592x1520
Summerside Elem	Exterior - Front Parking	Samsung	QNV-7080R	2.04_181115	2592x1520
Summerside Elem	Exterior - Generator Chiller	Samsung	QNV-7080R	2.04_181115	2592x1520
Summerside Elem	Exterior - Loading Dock	Samsung	QNV-7080R	2.04_181115	2592x1520
Summerside Elem	Exterior - Loading Dock	Samsung	QNV-7080R	2.04_181115	2592x1520
Summerside Elem	Exterior - Loading Dock	Samsung	QNV-7080R	2.04_181115	2592x1520
Summerside Elem	Exterior - Loading Dock Area	Samsung	QNV-7080R	2.04_181115	2592x1520
Summerside Elem	Exterior - Outside rear Entranc	Samsung	QNV-7080R	2.04_181115	2592x1520
Summerside Elem	Exterior - Outside room 196	Samsung	QNV-7080R	2.04_181115	2592x1520
Summerside Elem	Exterior - Parking Lot	Samsung	QNV-7080R	2.04_181115	2592x1520
Summerside Elem	Exterior - Parking Lot	Samsung	QNV-7080R	2.04_181115	2592x1520
Summerside Elem	Exterior - Playground	Samsung	QNV-7080R	2.04_181115	2592x1520
Summerside Elem	Exterior - Playground	Samsung	QNV-7080R	2.04_181115	2592x1520
Summerside Elem	Exterior - Side Entrance	Samsung	QNV-7080R	2.04_181115	2592x1520
Summerside Elem	Exterior - Sidewalk	Samsung	QNV-7080R	2.04_181115	2592x1520
Summerside Elem	Front Office	Samsung	QND-7080R	2.02_180612	2592x1520
Summerside Elem	Gym 1	Samsung	QND-7080R	2.02_180612	2592x1520
Summerside Elem	Gym 2	Samsung	QND-7080R	2.02_180612	2592x1520
Summerside Elem	Gym 3	Samsung	QND-7080R	2.02_180612	2592x1520
Summerside Elem	Gym 4	Samsung	QND-7080R	2.02_180612	2592x1520
Summerside Elem	Hallway by Room 113	Samsung	QND-7080R	2.02_180612	2592x1520
Summerside Elem	Hallyway by Room 141	Samsung	QND-7080R	2.02_180612	2592x1520
Summerside Elem	Library	Samsung	QND-7080R	2.02_180612	2592x1520
Summerside Elem	Library	Samsung	QND-7080R	2.02_180612	2592x1520

Summerside Elem	Library Entrance Hallway	Samsung	QND-7080R	2.02_180612	2592x1520
Summerside Elem	Library Hallway	Samsung	QND-7080R	2.02_180612	2592x1520
Summerside Elem	Loading Dock	Samsung	QND-7080R	2.04_181115	2592x1520
Summerside Elem	Main Vestibule	Samsung	QND-7080R	2.02_180612	2592x1520
Summerside Elem	Maintenance Hallway	Samsung	QND-7080R	2.04_181115	2592x1520
Summerside Elem	Media Room	Samsung	QND-7080R	2.02_180612	2592x1520
Summerside Elem	Media Room	Samsung	QND-7080R	2.02_180612	2592x1520
Summerside Elem	Office Hallway	Samsung	QND-7080R	2.02_180612	2592x1520
Summerside Elem	Reading Room Stairway	Samsung	QND-7080R	2.02_180612	2592x1520
Summerside Elem	Rear Entrance	Samsung	QND-7080R	2.04_181115	2592x1520
Summerside Elem	Serving Area	Samsung	QND-7080R	2.02_180612	2592x1520
Summerside Elem	Stage Left	Samsung	QND-7080R	2.02_180612	2592x1520
Summerside Elem	Stage Right	Samsung	QND-7080R	2.02_180612	2592x1520
Summerside Elem	Upstairs Hallway	Samsung	QND-7080R	2.02_180612	2592x1520
Summerside Elem	Upstairs Main Hallway	Samsung	QND-7080R	2.02_180612	2592x1520
WCHS Athletics	.224 View 2	AXIS VAPIX	M3058	8.40.3	1920x1080
WCHS Athletics	.224 View 3	AXIS VAPIX	M3058	8.40.3	1920x1080
WCHS Athletics	.224 View 4	AXIS VAPIX	M3058	8.40.3	1920x1080
WCHS Athletics	Athletic Gates	AXIS VAPIX	M3058	9.80.2.4	1920x1080
WCHS Athletics	Baseball Pressbox Front	AXIS VAPIX	M3058	9.80.2.4	2992x2992
WCHS Athletics	Baseball Pressbox Rear	AXIS VAPIX	M3058	9.80.2.4	2992x2992
WCHS Athletics	BB Behind Backstop	AXIS VAPIX	M3058	9.80.2.4	1920x1080
WCHS Athletics	BB Driveway	AXIS VAPIX	M3058	9.80.2.4	1920x1080
WCHS Athletics	BB E Sidewalk	AXIS VAPIX	M3058	9.80.2.4	1920x1080
WCHS Athletics	BB North	AXIS VAPIX	M3058	9.80.2.4	1920x1080
WCHS Athletics	BB SW Sidewalk	AXIS VAPIX	M3058	9.80.2.4	1920x1080
WCHS Athletics	Fieldhouse North	AXIS VAPIX	M3058	9.80.2.4	2992x2992
WCHS Athletics	Fieldhouse SE Corner	AXIS VAPIX	M3058	8.40.3	2992x2992
WCHS Athletics	Fieldhouse South	AXIS VAPIX	M3058	9.80.2.4	2992x2992
WCHS Athletics	Fieldhouse SW Corner	AXIS VAPIX	M3058	8.40.3	2992x2992
WCHS Athletics	Home Concessions E	AXIS VAPIX	M3058	8.40.3	1920x1080
WCHS Athletics	Home Concessions N	AXIS VAPIX	M3058	8.40.3	1920x1080
WCHS Athletics	Home Concessions W	AXIS VAPIX	M3058	8.40.3	1920x1080
WCHS Athletics	Home Press Box NW Corner	AXIS VAPIX	Q1798-LE	9.40.1	3840x2160
WCHS Athletics	Home Press Box SW Corner	AXIS VAPIX	Q1798-LE	9.40.1	3840x2160
WCHS Athletics	HP HW KC & Lock Rm	AXIS VAPIX	P3214-V	6.50.5.4	1280x720
WCHS Athletics	NE Track	AXIS VAPIX	M3058	9.80.2.4	1920x1080
WCHS Athletics	North Track	AXIS VAPIX	M3058	9.80.2.4	1920x1080
WCHS Athletics	Side Panorama	AXIS VAPIX	M3058	9.80.2.4	3584x1008
WCHS Athletics	Track Panorama	AXIS VAPIX	M3058	9.80.2.4	3584x1008
WCHS Athletics	Visitor Facilities	AXIS VAPIX	M3058	9.80.2.4	2992x2992
WCHS Athletics	Visitor Pressbox North	AXIS VAPIX	Q1798-LE	10.1.0	3840x2160
WCHS Athletics	Visitor Pressbox South	AXIS VAPIX	Q1798-LE	10.1.0	3840x2160
WCHS Athletics	WCHS Stadium 1	AXIS VAPIX	Q1798-LE	9.40.1	3840x2160
WCHS Athletics	WCHS Stadium 2	AXIS VAPIX	Q1798-LE	9.40.1	3840x2160
WCHS NVR1	1 Stair Theater HS	AXIS VAPIX	M3046-V	8.30.1.1	2560x1440
WCHS NVR1	2 Locker N HS	AXIS VAPIX	M3007	6.50.2.3	2592x1944
WCHS NVR1	2 Locker W HS	AXIS VAPIX	M3007	6.50.2.3	2592x1944
WCHS NVR1	2 RR N HS	AXIS VAPIX	M3046-V	8.30.1.1	2560x1440
WCHS NVR1	2 Stair NE HS	AXIS VAPIX	M3046-V	8.30.1.1	2688x1520

WCHS NVR1	2 Stair NW HS	AXIS VAPIX	M3046-V	8.30.1.1	2688x1520
WCHS NVR1	2 Stair SE HS	AXIS VAPIX	M3046-V	8.30.1.1	2688x1520
WCHS NVR1	2 Stair SW HS	AXIS VAPIX	M3046-V	8.30.1.1	2688x1520
WCHS NVR1	208 HW E HS	AXIS VAPIX	M3046-V	8.30.1.1	2560x1440
WCHS NVR1	208 HW W HS	AXIS VAPIX	M3046-V	8.30.1.1	2560x1440
WCHS NVR1	213 HW E HS	AXIS VAPIX	M3046-V	8.30.1.1	2560x1440
WCHS NVR1	213 HW W HS	AXIS VAPIX	M3046-V	8.30.1.1	2560x1440
WCHS NVR1	222 HW N HS	AXIS VAPIX	M3046-V	8.30.1.1	2560x1440
WCHS NVR1	222 HW S HS	AXIS VAPIX	M3046-V	8.30.1.1	2560x1440
WCHS NVR1	226 HW N HS	AXIS VAPIX	M3046-V	8.30.1.1	2560x1440
WCHS NVR1	226 HW S HS	AXIS VAPIX	M3046-V	8.30.1.1	2560x1440
WCHS NVR1	232 HW N HS	AXIS VAPIX	M3046-V	8.30.1.1	2560x1440
WCHS NVR1	232 HW S HS	AXIS VAPIX	M3046-V	8.30.1.1	2560x1440
WCHS NVR1	237 HW E HS	AXIS VAPIX	M3046-V	8.30.1.1	2560x1440
WCHS NVR1	237 HW W HS	AXIS VAPIX	M3046-V	8.30.1.1	2560x1440
WCHS NVR1	243 HW E HS	AXIS VAPIX	M3046-V	8.30.1.1	2560x1440
WCHS NVR1	243 HW W HS	AXIS VAPIX	M3046-V	8.30.1.1	2560x1440
WCHS NVR1	249 HW E HS	AXIS VAPIX	M3046-V	8.30.1.1	2560x1440
WCHS NVR1	3 Locker N HS	AXIS VAPIX	M3007	6.50.2.3	2592x1944
WCHS NVR1	3 Locker S HS	AXIS VAPIX	M3007	6.50.2.3	2592x1944
WCHS NVR1	3 Locker W HS	AXIS VAPIX	M3007	6.50.2.3	2592x1944
WCHS NVR1	3 Mech N HS	AXIS VAPIX	M3046-V	8.30.1.1	2560x1440
WCHS NVR1	3 Mech S HS	AXIS VAPIX	M3046-V	8.30.1.1	2560x1440
WCHS NVR1	3 RR N HS	AXIS VAPIX	M3046-V	8.30.1.1	2560x1440
WCHS NVR1	3 Stair NE HS	AXIS VAPIX	M3046-V	8.30.1.1	2560x1440
WCHS NVR1	3 Stair NW Ent HS	AXIS VAPIX	M3046-V	8.30.1.1	2560x1440
WCHS NVR1	3 Stair NW HS	AXIS VAPIX	M3046-V	8.30.1.1	2560x1440
WCHS NVR1	3 Stair SE HS	AXIS VAPIX	M3046-V	8.30.1.1	2560x1440
WCHS NVR1	3 Stair SW HS	AXIS VAPIX	M3046-V	8.30.1.1	2560x1440
WCHS NVR1	308 HW E HS	AXIS VAPIX	M3046-V	8.30.1.1	2560x1440
WCHS NVR1	308 HW W HS	AXIS VAPIX	M3046-V	8.30.1.1	2560x1440
WCHS NVR1	312 HW E HS	AXIS VAPIX	M3046-V	8.30.1.1	2560x1440
WCHS NVR1	312 HW W HS	AXIS VAPIX	M3046-V	8.30.1.1	2560x1440
WCHS NVR1	326 HW N HS	AXIS VAPIX	M3046-V	8.30.1.1	2560x1440
WCHS NVR1	326 HW S HS	AXIS VAPIX	M3046-V	8.30.1.1	2560x1440
WCHS NVR1	330 HW N HS	AXIS VAPIX	M3046-V	8.30.1.1	2560x1440
WCHS NVR1	330 HW S HS	AXIS VAPIX	M3046-V	8.30.1.1	2560x1440
WCHS NVR1	334 HW N HS	AXIS VAPIX	M3046-V	8.30.1.1	2560x1440
WCHS NVR1	334 HW S HS	AXIS VAPIX	M3046-V	8.30.1.1	2560x1440
WCHS NVR1	337 HW E HS	AXIS VAPIX	M3046-V	8.30.1.1	2560x1440
WCHS NVR1	337 HW W HS	AXIS VAPIX	M3046-V	8.30.1.1	2560x1440
WCHS NVR1	343 HW E HS	AXIS VAPIX	M3046-V	8.30.1.1	2560x1440
WCHS NVR1	343 HW W HS	AXIS VAPIX	M3046-V	8.30.1.1	2560x1440
WCHS NVR1	412 HW E HS	AXIS VAPIX	M3046-V	8.30.1.1	2560x1440
WCHS NVR1	412 HW W HS	AXIS VAPIX	M3046-V	8.30.1.1	2560x1440
WCHS NVR1	416 HW E HS	AXIS VAPIX	M3046-V	8.30.1.1	2560x1440
WCHS NVR1	416 HW W HS	AXIS VAPIX	M3046-V	8.30.1.1	2560x1440
WCHS NVR1	Backstage HW N HS	AXIS VAPIX	M3046-V	8.30.1.1	2560x1440
WCHS NVR1	Backstage HW S HS	AXIS VAPIX	M3046-V	8.30.1.1	2560x1440
WCHS NVR1	BPA 1 HS	AXIS VAPIX	M3007	6.50.2.3	2592x1944

WCHS NVR1	BPA 2 HS	AXIS VAPIX	M3007	6.50.2.3	2592x1944
WCHS NVR1	Ext Instrum Storage HS	AXIS VAPIX	P3225-LVE Mk II	8.30.1.1	1920x1080
WCHS NVR1	Ext Instrumental HS	AXIS VAPIX	P3225-LVE Mk II	8.30.1.1	1920x1080
WCHS NVR1	Ext Loading Dock NE HS	AXIS VAPIX	P3225-LVE Mk II	8.30.1.1	1920x1080
WCHS NVR1	Ext Loading Dock S HS	AXIS VAPIX	P3225-LVE Mk II	8.30.1.1	1920x1080
WCHS NVR1	Ext Main Elec W HS	AXIS VAPIX	P3225-LVE Mk II	8.30.1.1	1920x1080
WCHS NVR1	Ext Mech 1 HS	AXIS VAPIX	P3225-LVE Mk II	8.30.1.1	1920x1080
WCHS NVR1	Ext Mech 2 HS	AXIS VAPIX	P3225-LVE Mk II	8.30.1.1	1920x1080
WCHS NVR1	Ext S 3 HS	AXIS VAPIX	P3225-LVE Mk II	8.30.1.1	1920x1080
WCHS NVR1	Ext Virtual 1 HS	AXIS VAPIX	M3037	6.55.1.1	2592x1944
WCHS NVR1	Ext Virtual 2 HS	AXIS VAPIX	M3037	6.55.1.1	2592x1944
WCHS NVR1	Food Serv NE HS	AXIS VAPIX	M3046-V	8.30.1.1	2560x1440
WCHS NVR1	Food Serv NW HS	AXIS VAPIX	M3046-V	8.30.1.1	2560x1440
WCHS NVR1	Food Serv SE HS	AXIS VAPIX	M3046-V	8.30.1.1	2560x1440
WCHS NVR1	Food Serv SW HS	AXIS VAPIX	M3046-V	8.30.1.1	2560x1440
WCHS NVR1	Grand Staircase HS	AXIS VAPIX	M3046-V	8.30.1.1	2560x1440
WCHS NVR1	HP 2 Stair HS	AXIS VAPIX	M3046-V	8.30.1.1	2560x1440
WCHS NVR1	Hp Fit Room HS	AXIS VAPIX	M3046-V	8.30.1.1	2560x1440
WCHS NVR1	HP GroupFit HW 1 HS	AXIS VAPIX	M3007	6.50.2.3	2592x1944
WCHS NVR1	HP GroupFit HW2 HS	AXIS VAPIX	M3007	6.50.2.3	2592x1944
WCHS NVR1	Main St N1 Center HS	AXIS VAPIX	Q3709-PVE	5.75.1.11	3840x2160
WCHS NVR1	Main St N1 Left HS	AXIS VAPIX	Q3709-PVE	5.75.1.11	3840x2160
WCHS NVR1	Main St N1 Right HS	AXIS VAPIX	Q3709-PVE	5.75.1.11	3840x2160
WCHS NVR1	Main St S1 Center HS	AXIS VAPIX	Q3709-PVE	5.75.1.3	3840x2160
WCHS NVR1	Main St S1 Left HS	AXIS VAPIX	Q3709-PVE	5.75.1.3	3840x2160
WCHS NVR1	Main St S1 Right HS	AXIS VAPIX	Q3709-PVE	5.75.1.3	3840x2160
WCHS NVR1	Main Storage HS	AXIS VAPIX	M3007	6.50.2.3	2592x1944
WCHS NVR1	Mech Ath HS	AXIS VAPIX	M3046-V	8.30.1.1	2560x1440
WCHS NVR1	Media Crt HW N HS	AXIS VAPIX	M3046-V	8.30.1.1	2560x1440
WCHS NVR1	Media Crt HW S HS	AXIS VAPIX	M3046-V	8.30.1.1	2560x1440
WCHS NVR1	Outside Cooling Towers HS	AXIS VAPIX	P3225-LVE Mk II	8.30.1.1	1920x1080
WCHS NVR1	Recy RM HW HS	AXIS VAPIX	M3046-V	8.30.1.1	2560x1440
WCHS NVR1	Theater Stair HS	AXIS VAPIX	M3046-V	8.30.1.1	2688x1520
WCHS NVR1	Virtual HW W HS	AXIS VAPIX	M3046-V	8.30.1.1	2560x1440
WCHS NVR2	1 Locker N HS	AXIS VAPIX	M3007	6.50.2.3	2592x1944
WCHS NVR2	1 Locker S HS	AXIS VAPIX	M3007	6.50.2.3	2592x1944
WCHS NVR2	1 Locker W HS	AXIS VAPIX	M3007	6.50.2.3	2592x1944
WCHS NVR2	1 Stair NE HS	AXIS VAPIX	M3046-V	8.30.1.1	2688x1520
WCHS NVR2	1 Stair NW HS	AXIS VAPIX	M3046-V	8.30.1.1	2688x1520
WCHS NVR2	1 Stair SE HS	AXIS VAPIX	M3046-V	8.30.1.1	2688x1520
WCHS NVR2	1 Stair SW HS	AXIS VAPIX	M3046-V	8.30.1.1	2688x1520
WCHS NVR2	110 E HS	AXIS VAPIX	M3046-V	8.30.1.1	2560x1440
WCHS NVR2	110 W HS	AXIS VAPIX	M3046-V	8.30.1.1	2560x1440
WCHS NVR2	120 S HS	AXIS VAPIX	M3046-V	8.30.1.1	2560x1440
WCHS NVR2	129 N HS	AXIS VAPIX	M3046-V	8.30.1.1	2560x1440
WCHS NVR2	129 S HS	AXIS VAPIX	M3046-V	8.30.1.1	2560x1440
WCHS NVR2	145 E HS	AXIS VAPIX	M3046-V	8.30.1.1	2560x1440
WCHS NVR2	145 W HS	AXIS VAPIX	M3046-V	8.30.1.1	2560x1440
WCHS NVR2	2 Locker S HS	AXIS VAPIX	M3007	6.50.2.3	2592x1944
WCHS NVR2	Aux Gym HW E HS	AXIS VAPIX	M3046-V	8.30.1.1	2560x1440

WCHS NVR2	Aux Gym HW W HS	AXIS VAPIX	M3046-V	8.30.1.1	2560x1440
WCHS NVR2	Aux Gym NE HS	AXIS VAPIX	P3225-LV Mk II	8.30.1.1	1920x1080
WCHS NVR2	Aux Gym NW HS	AXIS VAPIX	P3225-LV Mk II	8.30.1.1	1920x1080
WCHS NVR2	Aux Gym SE HS	AXIS VAPIX	P3225-LV Mk II	8.30.1.1	1920x1080
WCHS NVR2	Aux Gym SW HS	AXIS VAPIX	P3225-LV Mk II	8.30.1.1	1920x1080
WCHS NVR2	Cafe NE HS	AXIS VAPIX	M3046-V	8.30.1.1	2560x1440
WCHS NVR2	Cafe NW HS	AXIS VAPIX	P3225-LV Mk II	8.30.1.1	1920x1080
WCHS NVR2	Cafe SE HS	AXIS VAPIX	M3046-V	8.30.1.1	2688x1520
WCHS NVR2	Cafe SW HS	AXIS VAPIX	P3225-LV Mk II	8.30.1.1	1920x1080
WCHS NVR2	Clinic HW HS	AXIS VAPIX	M3007	6.50.2.3	2592x1944
WCHS NVR2	Courtyard NE HS	AXIS VAPIX	P3225-LVE Mk II	8.30.1.1	1920x1080
WCHS NVR2	Courtyard NW HS	AXIS VAPIX	P3225-LVE Mk II	8.30.1.1	1920x1080
WCHS NVR2	Courtyard SE HS	AXIS VAPIX	P3225-LVE Mk II	8.30.1.1	1920x1080
WCHS NVR2	Courtyard SW HS	AXIS VAPIX	P3225-LVE Mk II	8.30.1.1	1920x1080
WCHS NVR2	Ext 120 HS	AXIS VAPIX	M3037	6.55.1.1	2592x1944
WCHS NVR2	Ext 128 HS	AXIS VAPIX	P3225-LVE Mk II	8.30.1.1	1920x1080
WCHS NVR2	Ext 133 HS	AXIS VAPIX	M3037	6.55.1.1	2592x1944
WCHS NVR2	Ext A.P. HS	AXIS VAPIX	M3037	6.55.1.1	2592x1944
WCHS NVR2	Ext ATT HS	AXIS VAPIX	P3225-LVE Mk II	8.30.1.1	1920x1080
WCHS NVR2	Ext Aux Gym SW HS	AXIS VAPIX	M3037	6.55.1.1	2592x1944
WCHS NVR2	Ext Cafe HS	AXIS VAPIX	P3225-LVE Mk II	8.40.4	1920x1080
WCHS NVR2	Ext Gym E HS	AXIS VAPIX	P3225-LVE Mk II	8.30.1.1	1920x1080
WCHS NVR2	Ext HP Kids Club HS	AXIS VAPIX	M3037	6.55.1.1	2592x1944
WCHS NVR2	Ext HP NW 2 HS	AXIS VAPIX	P3225-LVE Mk II	8.30.1.1	1920x1080
WCHS NVR2	Ext HP NW1 HS	AXIS VAPIX	P3225-LVE Mk II	8.30.1.1	1920x1080
WCHS NVR2	Ext HP S HS	AXIS VAPIX	P3225-LVE Mk II	8.30.1.1	1920x1080
WCHS NVR2	Ext HP SE HS	AXIS VAPIX	P3225-LVE Mk II	8.30.1.1	1920x1080
WCHS NVR2	Ext HP SW HS	AXIS VAPIX	M3037	6.55.1.1	2592x1944
WCHS NVR2	Ext HP W HS	AXIS VAPIX	M3037	6.55.1.1	2592x1944
WCHS NVR2	Ext Main N HS	AXIS VAPIX	M3037	6.55.1.1	2592x1944
WCHS NVR2	Ext NE HS	AXIS VAPIX	M3037	6.55.1.1	2592x1944
WCHS NVR2	Ext NW Stair HS	AXIS VAPIX	M3037	6.55.1.1	2592x1944
WCHS NVR2	Ext Pool HS	AXIS VAPIX	P3225-LVE Mk II	8.30.1.1	1920x1080
WCHS NVR2	Ext S Ent 1 HS	AXIS VAPIX	P3225-LVE Mk II	8.30.1.1	1920x1080
WCHS NVR2	Ext S Ent 2 HS	AXIS VAPIX	P3225-LVE Mk II	8.30.1.1	1920x1080
WCHS NVR2	Ext Training RM N HS	AXIS VAPIX	P3225-LVE Mk II	8.30.1.1	1920x1080
WCHS NVR2	Gym Exit SE HS	AXIS VAPIX	M3046-V	8.30.1.1	2560x1440
WCHS NVR2	Gym Exit SW HS	AXIS VAPIX	M3046-V	8.30.1.1	2560x1440
WCHS NVR2	Gym HW N HS	AXIS VAPIX	M3046-V	8.30.1.1	2560x1440
WCHS NVR2	Gym HW S HS	AXIS VAPIX	M3046-V	8.30.1.1	2560x1440
WCHS NVR2	HP 1 Stair S HS	AXIS VAPIX	M3046-V	8.30.1.1	2560x1440
WCHS NVR2	HP 1 Stair W HS	AXIS VAPIX	M3046-V	8.30.1.1	2560x1440
WCHS NVR2	HP Boutique HS	AXIS VAPIX	M3046-V	8.30.1.1	2560x1440
WCHS NVR2	HP Circ HS	AXIS VAPIX	M3007	6.50.2.3	2592x1944
WCHS NVR2	HP Ext N HS	AXIS VAPIX	P3225-LVE Mk II	8.30.1.1	1920x1080
WCHS NVR2	HP Ext NE HS	AXIS VAPIX	P3225-LVE Mk II	8.30.1.1	1920x1080
WCHS NVR2	HP Kids Club HS	AXIS VAPIX	M3046-V	8.30.1.1	2560x1440
WCHS NVR2	HP Sauna HS	AXIS VAPIX	M3007	6.50.2.3	2592x1944
WCHS NVR2	HP Therapy Pool NE HS	AXIS VAPIX	M3046-V	8.30.1.1	2560x1440
WCHS NVR2	HP Therapy Pool NW HS	AXIS VAPIX	M3046-V	8.30.1.1	2560x1440

WCHS NVR2	HP Therapy Pool SE HS	AXIS VAPIX	M3046-V	8.30.1.1	2560x1440
WCHS NVR2	HP Therapy Pool SW HS	AXIS VAPIX	M3046-V	8.30.1.1	2560x1440
WCHS NVR2	HP Vest HS	AXIS VAPIX	P3225-LVE Mk II	8.30.1.1	1920x1080
WCHS NVR2	Main Gym NE HS	AXIS VAPIX	P3225-LV Mk II	8.30.1.1	1920x1080
WCHS NVR2	Main Gym NW HS	AXIS VAPIX	P3225-LV Mk II	8.30.1.1	1920x1080
WCHS NVR2	Main Gym SE HS	AXIS VAPIX	P3225-LV Mk II	8.30.1.1	1920x1080
WCHS NVR2	Main Gym SW HS	AXIS VAPIX	P3225-LV Mk II	8.30.1.1	1920x1080
WCHS NVR2	Main Pool NE HS	AXIS VAPIX	M3046-V	8.30.1.1	2560x1440
WCHS NVR2	Main Pool NW HS	AXIS VAPIX	M3046-V	8.30.1.1	2560x1440
WCHS NVR2	Main Pool SE HS	AXIS VAPIX	M3046-V	8.30.1.1	2560x1440
WCHS NVR2	Main Pool SW HS	AXIS VAPIX	M3046-V	8.30.1.1	2560x1440
WCHS NVR2	Main St N2 Center	AXIS VAPIX	Q3709-PVE	5.75.1.3	1280x720
WCHS NVR2	Main St N2 Left HS	AXIS VAPIX	Q3709-PVE	5.75.1.3	1280x720
WCHS NVR2	Main St N2 Right HS	AXIS VAPIX	Q3709-PVE	5.75.1.3	1280x720
WCHS NVR2	Main St S Ent HS	AXIS VAPIX	M3046-V	8.30.1.1	2560x1440
WCHS NVR2	Main St S2 Center HS	AXIS VAPIX	Q3709-PVE	5.75.1.3	3840x2160
WCHS NVR2	Main St S2 Left HS	AXIS VAPIX	Q3709-PVE	5.75.1.3	3840x2160
WCHS NVR2	Main St S2 Right HS	AXIS VAPIX	Q3709-PVE	5.75.1.3	3840x2160
WCHS NVR2	Ref RR HS	AXIS VAPIX	M3007	6.50.2.3	2592x1944
WCHS NVR2	Training RM E HS	AXIS VAPIX	M3046-V	8.30.1.1	2560x1440
WCHS NVR2	Training RM W HS	AXIS VAPIX	M3046-V	8.30.1.1	2560x1440
WCHS NVR2	Vest Int. HS	AXIS VAPIX	P3225-LV Mk II	8.30.1.1	1920x1080
WCHS NVR2	W Vest HS	AXIS VAPIX	P3225-LV Mk II	8.30.1.1	1920x1080
WCHS	1				
WCHS	2				
WCHS	3				
WCHS	4				
WCMS NVR 1	E @ 163	Sony	SNC-EM630	2.7.2	1080x1920
WCMS NVR 1	Exterior (PAC East)	Sony	SNC-EM632R	2.8.0	1920x1080
WCMS NVR 1	H @ 201 (West)	Sony	SNC-EM630	2.8.0	1080x1920
WCMS NVR 1	H @ 201B (East)	Sony	SNC-EM630	2.8.0	1080x1920
WCMS NVR 1	I @ 324	Sony	SNC-EM630	2.8.0	1080x1920
WCMS NVR 1	IL @ 241	Sony	SNC-EM630	2.8.0	1080x1920
WCMS NVR 1	J @ 202A	Sony	SNC-EM630	2.8.0	1080x1920
WCMS NVR 1	J @ 209	Sony	SNC-EM630	2.8.0	1080x1920
WCMS NVR 1	J @ 214	Sony	SNC-EM630	2.8.0	1080x1920
WCMS NVR 1	K @ 220	Sony	SNC-EM630	2.8.0	1080x1920
WCMS NVR 1	K @ 224 (East)	Sony	SNC-EM630	2.8.0	1080x1920
WCMS NVR 1	K @ 224 (North)	Sony	SNC-EM630	2.8.0	1080x1920
WCMS NVR 1	K @ Door 16	Sony	SNC-EM630	2.8.0	1080x1920
WCMS NVR 1	L @ 229	Sony	SNC-EM630	2.8.0	1080x1920
WCMS NVR 1	M @ Exit 12	Sony	SNC-EM630	2.8.0	1080x1920
WCMS NVR 1	M Entrance Double Doors	Sony	SNC-EM630	2.8.0	1920x1080
WCMS NVR 1	MPR South	AXIS VAPIX	P3225-LVE Mk II	9.80.3.13	1280x720
WCMS NVR 1	N @ 322	Sony	SNC-EM630	2.8.0	1080x1920
WCMS NVR 1	N Emer Drive - East	AXIS VAPIX	M3058	9.80.2.4	1920x1080
WCMS NVR 1	N Emer Drive - East 2	AXIS VAPIX	M3058	9.80.2.4	1920x1080
WCMS NVR 1	N Emer Drive - N Gym	AXIS VAPIX	M3058	9.80.2.4	2992x2992
WCMS NVR 1	N Emer Drive - N Gym 2	AXIS VAPIX	M3058	9.80.2.4	2992x2992
WCMS NVR 1	N Emer Drive - North	AXIS VAPIX	M3058	9.80.2.4	1920x1080

WCMS NVR 1	N Emer Drive - NW	AXIS VAPIX	M3058	9.80.2.4	1920x1080
WCMS NVR 1	N Emer Drive - West	AXIS VAPIX	M3058	9.80.2.4	1920x1080
WCMS NVR 1	North Office (Waiting)	Sony	SNC-XM631	2.8.0	1920x1080
WCMS NVR 1	NP (South)	Sony	SNC-EM630	2.8.0	1080x1920
WCMS NVR 1	NP (West)	Sony	SNC-EM630	2.8.0	1080x1920
WCMS NVR 1	O @ 301	Sony	SNC-EM630	2.8.0	1080x1920
WCMS NVR 1	P @ 304	Sony	SNC-EM630	2.8.0	1080x1920
WCMS NVR 1	P South (Main Cafe)	Sony	SNC-EM630	2.8.0	1080x1920
WCMS NVR 1	PAC Lobby	Sony	SNC-XM631	2.8.0	1920x1080
WCMS NVR 1	Parking Lot (Rear of PAC)	Sony	SNC-EM632R	2.8.0	1920x1080
WCMS NVR 1	Q @ South Gym	Sony	SNC-EM630	2.8.0	1080x1920
WCMS NVR 1	QR South	AXIS VAPIX	P3265-V	10.9.4	1920x1080
WCMS NVR 1	S @ 406	Sony	SNC-XM631	2.8.0	1920x1080
WCMS NVR 1	South Cafe (NE corner)	AXIS VAPIX	P3214-V	6.50.5.4	1280x720
WCMS NVR 1	South Entrance Lobby	Sony	SNC-XM631	2.8.0	1920x1080
WCMS NVR 1	South Office (Waiting)	Sony	SNC-XM631	2.8.0	1920x1080
WCMS NVR 1	T @ 406C	Sony	SNC-EM630	2.8.0	1080x1920
WCMS NVR 1	Wolf Way South	Sony	SNC-EM630	2.8.0	1920x1080
WCMS NVR 2	A West (at RM 110)	Sony	SNC-EM630	2.7.2	1080x1920
WCMS NVR 2	AB East	Sony	SNC-EM630	2.7.2	1080x1920
WCMS NVR 2	AB North	Sony	SNC-EM630	2.7.2	1080x1920
WCMS NVR 2	AB West	Sony	SNC-EM630	2.7.2	1080x1920
WCMS NVR 2	AE North	Sony	SNC-EM630	2.7.2	1080x1920
WCMS NVR 2	AG East	Sony	SNC-EM630	2.7.2	1080x1920
WCMS NVR 2	AG North (at RR)	Sony	SNC-EM630	2.7.2	1080x1920
WCMS NVR 2	AW @ North Office	Sony	SNC-EM630	2.7.2	1920x1080
WCMS NVR 2	B @ Exit 10	Sony	SNC-EM630	2.7.2	1080x1920
WCMS NVR 2	C @ 154	Sony	SNC-EM630	2.7.2	1080x1920
WCMS NVR 2	DE	Sony	SNC-EM630	2.8.0	1080x1920
WCMS NVR 2	E @ 137	Sony	SNC-EM630	2.7.2	1080x1920
WCMS NVR 2	Exterior (at RM 116)	Sony	SNC-EM632R	2.8.0	1920x1080
WCMS NVR 2	Exterior (Dumpster East)	Sony	SNC-EM632R	2.8.0	1920x1080
WCMS NVR 2	Exterior (North Circle)	Sony	SNC-EM632R	2.8.0	1920x1080
WCMS NVR 2	Exterior (North Entrance)	Sony	SNC-EM632R	2.8.0	1920x1080
WCMS NVR 2	Exterior (North Gym/Health S	AXIS VAPIX	Q3708-PVE	6.55.9	2560x1440
WCMS NVR 2	Exterior (South Entrance - Nor	AXIS VAPIX	Q3708-PVE	6.55.9	1920x1080
WCMS NVR 2	Exterior (South Entrance - Nor	AXIS VAPIX	Q3708-PVE	6.55.9	1920x1080
WCMS NVR 2	Exterior (South Entrance)	AXIS VAPIX	Q3708-PVE	6.55.9	1920x1080
WCMS NVR 2	Exterior 333	Sony	SNC-EM632R	2.8.0	1920x1080
WCMS NVR 2	F @ 141B	Sony	SNC-EM630	2.7.2	1920x1080
WCMS NVR 2	G @ 124	Sony	SNC-EM630	2.7.2	1080x1920
WCMS NVR 2	G @ 135	Sony	SNC-EM630	2.7.2	1080x1920
WCMS NVR 2	G @ Storage Room	Sony	SNC-EM630	2.7.2	1080x1920
WCMS NVR 2	M @ Exit Door 11	Sony	SNC-EM630	2.8.0	1080x1920
WCMS NVR 2	MPR Restroom	Sony	SNC-XM631	2.8.0	1920x1080
WCMS NVR 2	N Emer Drive - 118	Sony	SNC-EM632R	2.8.0	1920x1080
WCMS NVR 2	N Emer Drive - 128	Sony	SNC-EM632R	2.7.2	1920x1080
WCMS NVR 2	N Emer Drive - 136	Sony	SNC-EM632R	2.8.0	1920x1080
WCMS NVR 2	N Emer Drive - N Gym - West	Sony	SNC-EM632R	2.8.0	1920x1080
WCMS NVR 2	North Bus Circle	AXIS VAPIX	M3058	9.80.2.4	2992x2992

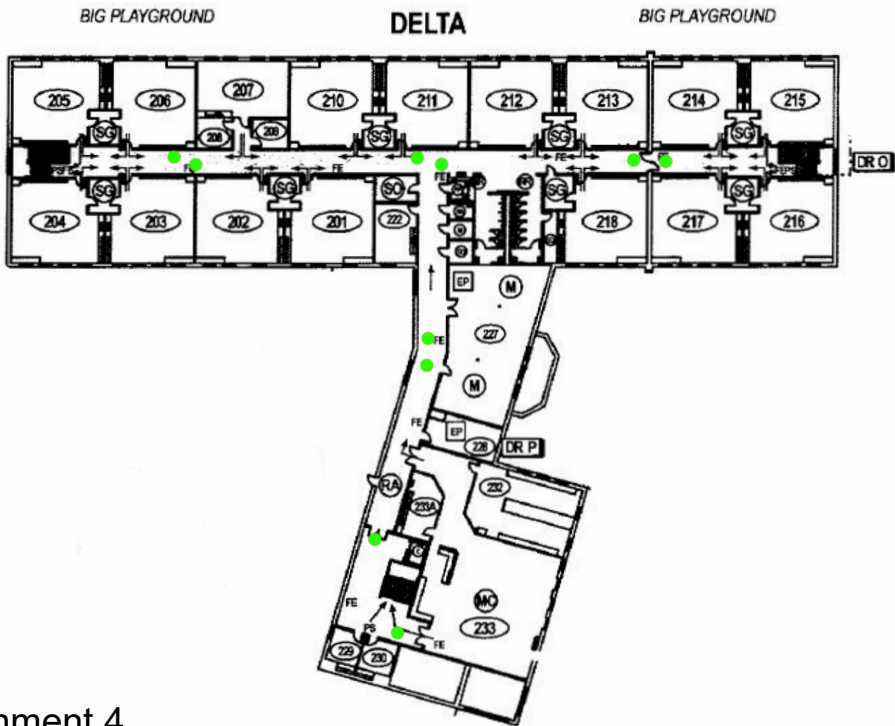
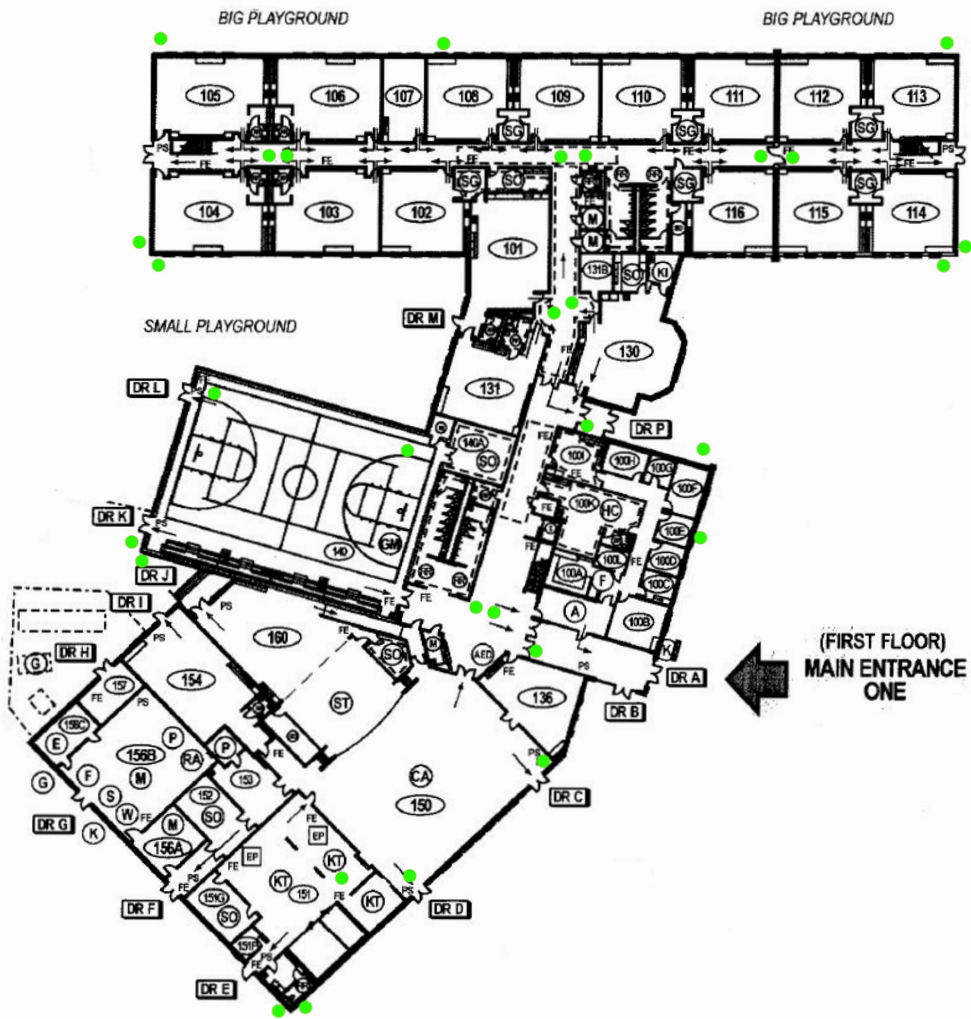
WCMS NVR 2	North Cafe (NW Corner)	Sony	SNC-EM630	2.7.2	1920x1080
WCMS NVR 2	North Cafe (SE Corner)	Sony	SNC-EM630	2.7.2	1920x1080
WCMS NVR 2	North Gym (SE Corner)	Sony	SNC-EM632R	2.8.0	1920x1080
WCMS NVR 2	North Gym Lobby	Sony	SNC-XM631	2.7.2	1920x1080
WCMS NVR 2	North Gym NORTH	Sony	SNC-EM632R	2.8.0	1920x1080
WCMS NVR 2	North Gym RR-Stairs	Sony	SNC-EM630	2.7.2	1920x1080
WCMS NVR 2	P @ 247	Sony	SNC-EM630	2.7.2	1920x1080
WCMS NVR 2	P @ 302	Sony	SNC-EM630	2.7.2	1080x1920
WCMS NVR 2	PAC Restroom	Sony	SNC-XM631	2.7.2	1920x1080
WCMS NVR 2	Parking Lot (Behind PAC)	Sony	SNC-EM632R	2.8.0	1920x1080
WCMS NVR 2	Parking Lot (East Circle)	Sony	SNC-EM632R	2.8.0	1920x1080
WCMS NVR 2	Parking Lot (Health Source - N	Sony	SNC-EM632R	2.8.0	1920x1080
WCMS NVR 2	Parking Lot (North Gym/Healt	AXIS VAPIX	Q3708-PVE	6.55.9	2560x1440
WCMS NVR 2	Parking Lot (North Gym/Healt	AXIS VAPIX	Q3708-PVE	6.55.9	2560x1440
WCMS NVR 2	Q @ 408	Sony	SNC-EM630	2.7.2	1920x1080
WCMS NVR 2	R @ Exit 3 (Activity Door)	Sony	SNC-XM631	2.7.2	1920x1080
WCMS NVR 2	S Emer Drive - 306	Sony	SNC-EM632R	2.8.0	1920x1080
WCMS NVR 2	South Cafe (Center)	Sony	SNC-EM630	2.7.2	1920x1080
WCMS NVR 2	South Cafe (Kitchen 1)	Sony	SNC-XM631	2.7.2	1920x1080
WCMS NVR 2	South Cafe (Kitchen 2)	Sony	SNC-XM631	2.7.2	1920x1080
WCMS NVR 2	South Cafe (NW Corner)	Sony	SNC-EM630	2.7.2	1920x1080
WCMS NVR 2	South Cafe (SE Corner)	Sony	SNC-EM630	2.7.2	1920x1080
WCMS NVR 2	South Cafe (SW Corner)	Sony	SNC-EM630	2.7.2	1920x1080
WCMS NVR 2	South Entrance NORTH	Sony	SNC-EM630	2.7.2	1920x1080
WCMS NVR 2	South Gym (NW Corner)	Sony	SNC-EM632R	2.8.0	1920x1080
WCMS NVR 2	South Gym (SE Corner)	Sony	SNC-EM632R	2.8.0	1920x1080
WCMS NVR 2	Wolf Way (North)	Sony	SNC-EM630	2.7.2	1080x1920
WCMS	1				
WCMS	2				
WCMS	3				
WCMS	4				
WCMS	5				
WCMS	6				
Willowville	1st Floor ELA 140	Samsung	QND-7080R	2.02_180612	2592x1520
Willowville	1st Floor Hallway	Samsung	QND-7080R	2.02_180612	2592x1520
Willowville	1st Floor Hallway 105	Samsung	QND-7080R	2.02_180612	2592x1520
Willowville	Art Hallway by Classroom 260	Samsung	QND-7080R	2.02_180612	1920x1080
Willowville	Art Hallway by Room 261 Faci	Samsung	QND-7080R	2.02_180612	1920x1080
Willowville	Cafeteria	Samsung	QND-7080R	2.02_180612	1920x1080
Willowville	Cafeteria Entrance	Samsung	QND-7080R	2.02_180612	1920x1080
Willowville	Corridor C203	Samsung	QND-7080R	2.02_180612	1920x1080
Willowville	Custodial Room	Samsung	QND-7080R	2.02_180612	1920x1080
Willowville	ELA	Samsung	QND-7080R	2.02_180612	1920x1080
Willowville	ELA 140 and Hallway	Samsung	QND-7080R	2.02_180612	2592x1520
Willowville	ELA and Hallway by Classroom	Samsung	QND-7080R	2.02_180612	1920x1080
Willowville	ELA and Hallway by Room 216	Samsung	QND-7080R	2.02_180612	1920x1080
Willowville	ELA by Room 232	Samsung	QND-7080R	2.02_180612	1920x1080
Willowville	ELA by Room 244	Samsung	QND-7080R	2.02_180612	1920x1080
Willowville	Entrance Near Cafe	Samsung	QND-7080R	2.02_180612	2592x1520
Willowville	Exterior - Admin Entrance	Samsung	QNV-7080R	2.04_181115	2592x1520

Willowville	Exterior - Chiller and Generatc	Samsung	QNV-7080R	2.04_181115	1920x1080
Willowville	Exterior - Corner Yard	Samsung	QNV-7080R	2.04_181115	2592x1520
Willowville	Exterior - Driveway	Samsung	QNV-7080R	2.04_181115	2592x1520
Willowville	Exterior - Front Entrance	Samsung	QNV-7080R	2.04_181115	2592x1520
Willowville	Exterior - Front Entrance Side	Samsung	QNV-7080R	2.04_181115	2592x1520
Willowville	Exterior - Front Parking	Samsung	QNV-7080R	2.04_181115	2592x1520
Willowville	Exterior - Loading Dock	Samsung	QNV-7080R	2.04_181115	2592x1520
Willowville	Exterior - Loading Dock Area	Samsung	QNV-7080R	2.04_181115	2592x1520
Willowville	Exterior - Outside Cafeteria	Samsung	QNV-7080R	2.04_181115	2592x1520
Willowville	Exterior - Outside Room 192	Samsung	QNV-7080R	2.04_181115	1920x1080
Willowville	Exterior - Parking Lot	Samsung	QNV-7080R	2.04_181115	2592x1520
Willowville	Exterior - Parking Lot	Samsung	QNV-7080R	2.04_181115	2592x1520
Willowville	Exterior - Playground	Samsung	QNV-7080R	2.04_181115	2592x1520
Willowville	Exterior - Playground	Samsung	QNV-7080R	2.04_181115	2592x1520
Willowville	Exterior - Side Entrance	Samsung	QNV-7080R	2.04_181115	2592x1520
Willowville	Exterior - Side Entrance	Samsung	QNV-7080R	2.04_181115	2592x1520
Willowville	Exterior - Side Parking	Samsung	QNV-7080R	2.04_181115	2592x1520
Willowville	Exterior - Sidewalk	Samsung	QNV-7080R	2.04_181115	2592x1520
Willowville	Exterior - Sidewalk and Drive	Samsung	QNV-7080R	2.04_181115	2592x1520
Willowville	Front Office	Samsung	QND-7080R	2.02_180612	2592x1520
Willowville	Gym 1	Samsung	QND-7080R	2.02_180612	2592x1520
Willowville	Gym 2	Samsung	QND-7080R	2.02_180612	2592x1520
Willowville	Gym 3	Samsung	QND-7080R	2.02_180612	2592x1520
Willowville	Gym 4	Samsung	QND-7080R	2.02_180612	2592x1520
Willowville	Library	Samsung	QND-7080R	2.02_180612	2592x1520
Willowville	Library	Samsung	QND-7080R	2.02_180612	2592x1520
Willowville	Library Entrance Hallway	Samsung	QND-7080R	2.02_180612	2592x1520
Willowville	Library Hallway	Samsung	QND-7080R	2.02_180612	2592x1520
Willowville	Loading Dock	Samsung	QND-7080R	2.02_180612	1920x1080
Willowville	Main Vestibule	Samsung	QND-7080R	2.02_180612	2592x1520
Willowville	Maintenance Hallway	Samsung	QND-7080R	2.02_180612	1920x1080
Willowville	Media Room	Samsung	QND-7080R	2.02_180612	2592x1520
Willowville	Media Room	Samsung	QND-7080R	2.02_180612	2592x1520
Willowville	Office Hallway	Samsung	QND-7080R	2.02_180612	2592x1520
Willowville	Reading Room Stairway	Samsung	QND-7080R	2.02_180612	1920x1080
Willowville	Rear Entrance	Samsung	QND-7080R	2.02_180612	1920x1080
Willowville	Serving Area	Samsung	QND-7080R	2.02_180612	1920x1080
Willowville	Stage Left	Samsung	QND-7080R	2.02_180612	1920x1080
Willowville	Stage Right	Samsung	QND-7080R	2.02_180612	1920x1080
Willowville	Upstairs Hallway Overlook	Samsung	QND-7080R	2.02_180612	1920x1080
Willowville	Upstairs Main Hallway	Samsung	QND-7080R	2.02_180612	1920x1080
Withamsville		1	AXIS VAPIX M7016		
Withamsville		10	AXIS VAPIX M7016		
Withamsville		11	AXIS VAPIX M7016		
Withamsville		12	AXIS VAPIX M7016		
Withamsville		13	AXIS VAPIX M7016		
Withamsville		14	AXIS VAPIX M7016		
Withamsville		15	AXIS VAPIX M7016		
Withamsville		16	AXIS VAPIX M7016		
Withamsville		17	AXIS VAPIX M7016		

Withamsville		18	AXIS VAPIX	M7016		
Withamsville		19	AXIS VAPIX	M7016		
Withamsville		2	AXIS VAPIX	M7016		
Withamsville		20	AXIS VAPIX	M7016		
Withamsville		21	AXIS VAPIX	M7016		
Withamsville		22	AXIS VAPIX	M7016		
Withamsville		23	AXIS VAPIX	M7016		
Withamsville		24	AXIS VAPIX	M7016		
Withamsville		25	AXIS VAPIX	M7016		
Withamsville		26	AXIS VAPIX	M7016		
Withamsville		27	AXIS VAPIX	M7016		
Withamsville		28	AXIS VAPIX	M7016		
Withamsville		29	AXIS VAPIX	M7016		
Withamsville		3	AXIS VAPIX	M7016		
Withamsville		30	AXIS VAPIX	M7016		
Withamsville		31	AXIS VAPIX	M7016		
Withamsville		32	AXIS VAPIX	M7016		
Withamsville		33	AXIS VAPIX	M7016		
Withamsville		34	AXIS VAPIX	M7016		
Withamsville		35	AXIS VAPIX	M7016		
Withamsville		36	AXIS VAPIX	M7016		
Withamsville		37	AXIS VAPIX	M7016		
Withamsville		38	AXIS VAPIX	M7016		
Withamsville		39	AXIS VAPIX	M7016		
Withamsville		4	AXIS VAPIX	M7016		
Withamsville		40	AXIS VAPIX	M7016		
Withamsville		41	AXIS VAPIX	M7016		
Withamsville		42	AXIS VAPIX	M7016		
Withamsville		43	AXIS VAPIX	M7016		
Withamsville		44	AXIS VAPIX	M7016		
Withamsville		45	AXIS VAPIX	M7016		
Withamsville		46	AXIS VAPIX	M7016		
Withamsville		47	AXIS VAPIX	M7016		
Withamsville		48	AXIS VAPIX	M7016		
Withamsville		5	AXIS VAPIX	M7016		
Withamsville		6	AXIS VAPIX	M7016		
Withamsville		7	AXIS VAPIX	M7016		
Withamsville		8	AXIS VAPIX	M7016		
Withamsville		9	AXIS VAPIX	M7016		
Withamsville-Tob		1				
Withamsville-Tob		2				
Withamsville-Tob		3				
Withamsville-Tob		4				
Withamsville-Tob		5				
Withamsville-Tob		6				
Withamsville-Tob		7				
Withamsville-Tob		8				
Withamsville-Tob		9				
Withamsville-Tob		10				
Withamsville-Tob		11				

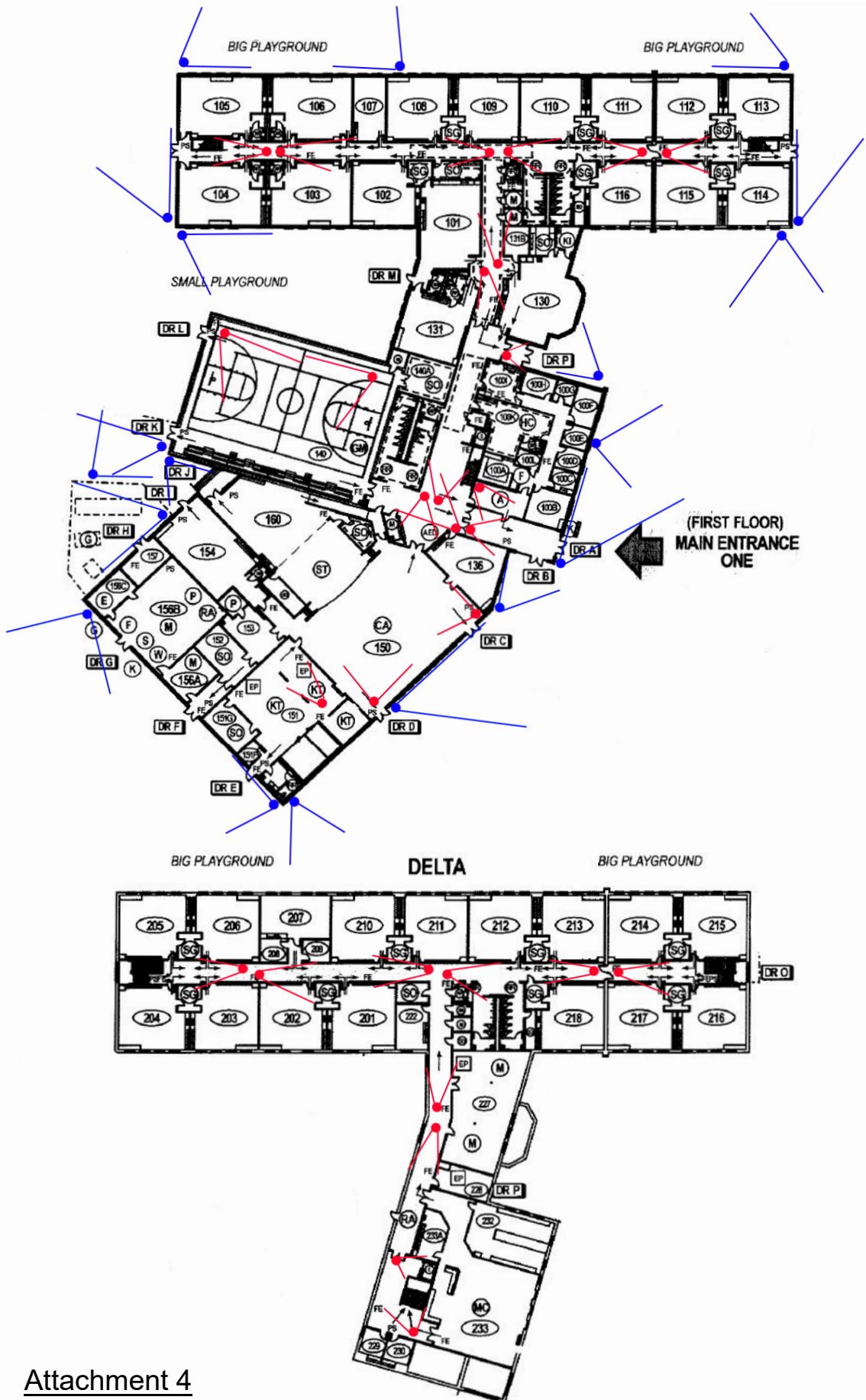
Withamsville-Tob	12				
Withamsville-Tob	13				
Withamsville-Tob	14				
Withamsville-Tob	15				
Withamsville-Tob	16				
Withamsville-Tob	17				
Withamsville-Tob	18				
Withamsville-Tob	19				
Withamsville-Tob	20				
Withamsville-Tob	21				
Withamsville-Tob	22				
Withamsville-Tob	23				
Withamsville-Tob	24				
Withamsville-Tob	25				
Withamsville-Tob	26				
Withamsville-Tob	27				
Withamsville-Tob	28				
Withamsville-Tob	29				
Withamsville-Tob	30				
Withamsville-Tob	31				
Withamsville-Tob	32				
Withamsville-Tob	33				
Withamsville-Tob	34				
Withamsville-Tob	35				
Withamsville-Tob	36				
Withamsville-Tob	37				
Withamsville-Tob	38				
Withamsville-Tob	39				
Withamsville-Tob	40				
Withamsville-Tob	41				
Withamsville-Tob	42				
Withamsville-Tob	43				
Withamsville-Tob	44				
Withamsville-Tob	45				
Withamsville-Tob	46				
Withamsville-Tob	47				
Withamsville-Tob	48				
Withamsville-Tob	49				
Withamsville-Tob	50				
Withamsville-Tob	51				
District Office	UL Recept				
District Office	UL Receiving				
District Office	UL Supt Hall				
District Office	UL Asst. Supt. Hall				
District Office	LL Central Enroll Vestibuie				
District Office	LL Back Door				
District Office	LL Asst Supt				
District Office	LL Mech Room				
District Office	1				
District Office	2				

District Office	3				
District Office	4				
Ferguson	Suite 200 Front Door				
Ferguson	Suite 200 Back Door				
Ferguson	Storage & Repair Ctr Door				
Ferguson	Suite 230 Front Door				
Ferguson	WCStudios Front Door				



Attachment 4
4.1 Amelia Elementary School

- Existing Camera

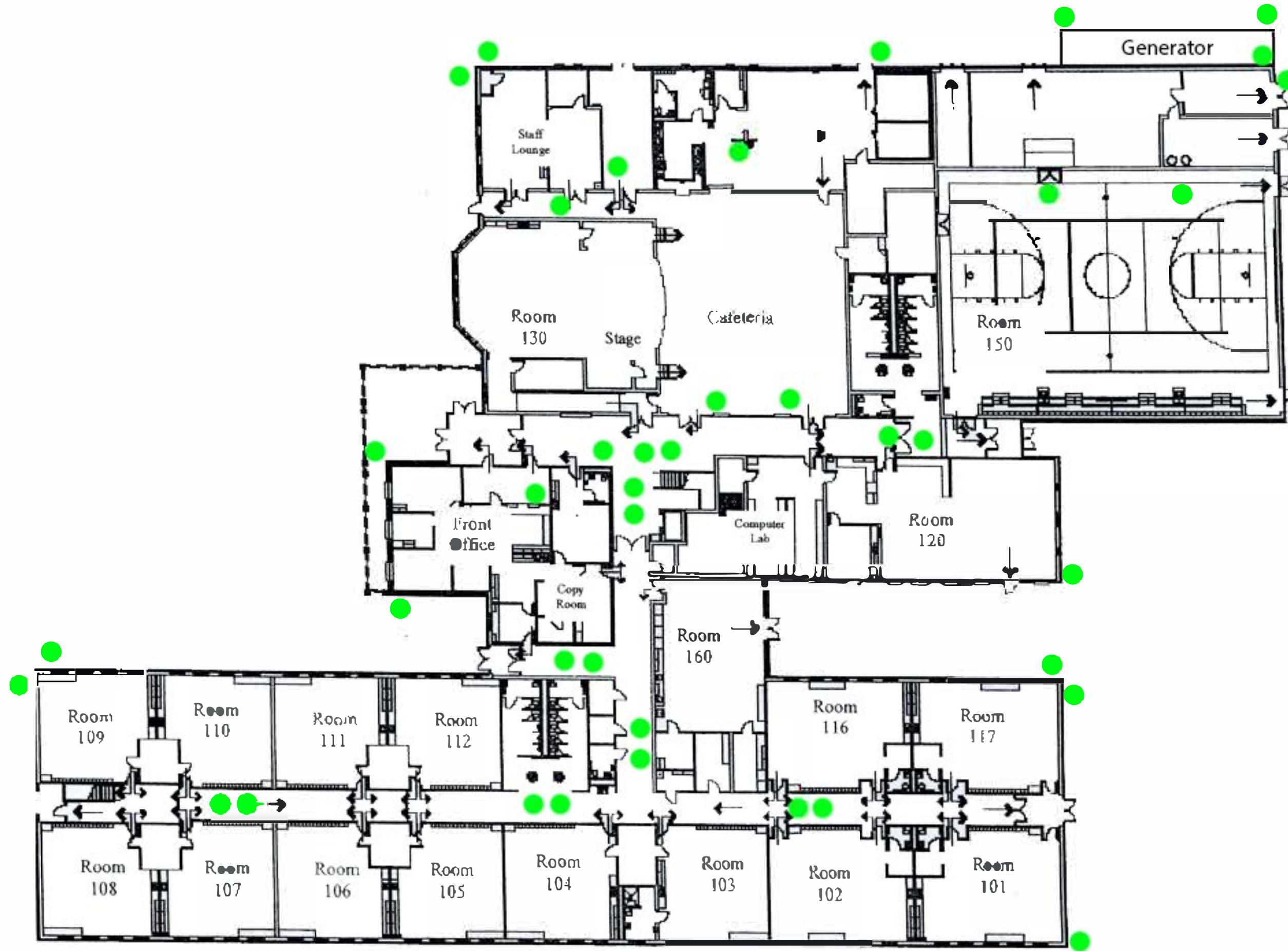


Attachment 4
 4.2 Amelia Elementary School

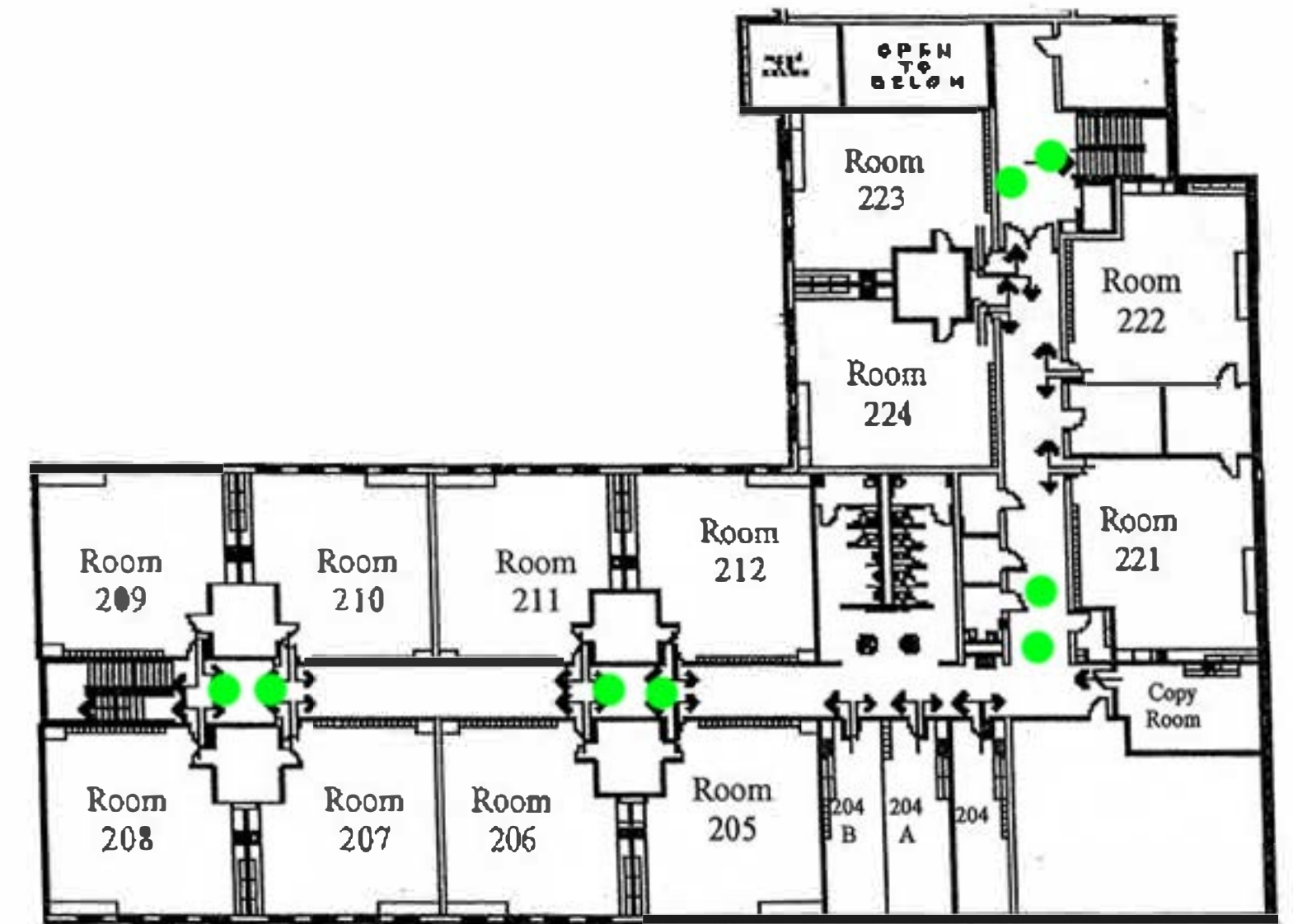
- New Internal Camera
- New External Camera

Attachment 4
4.3 Withamsville-Tobasco Elementary School

● Current Camera



First Floor

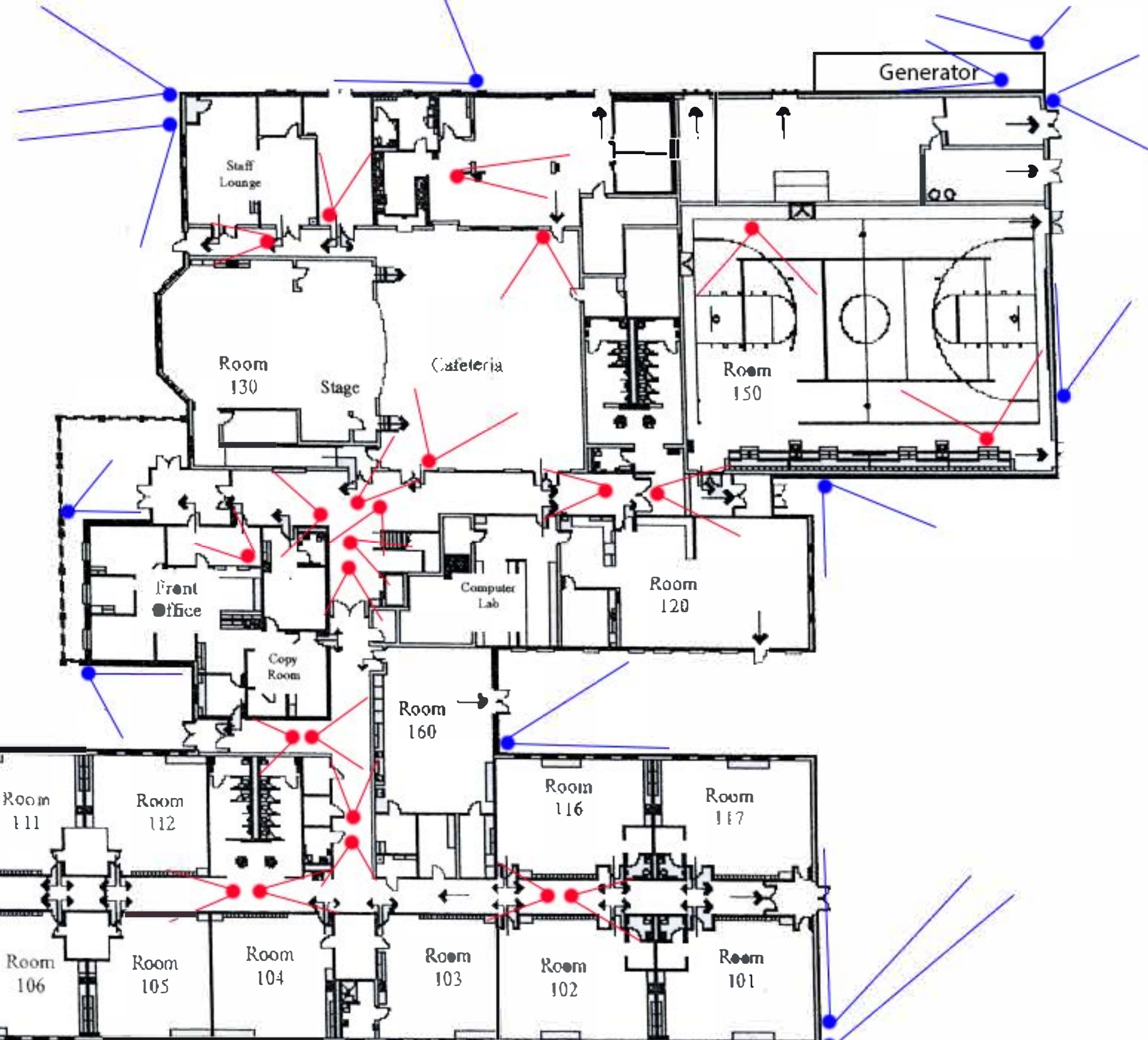


Second Floor

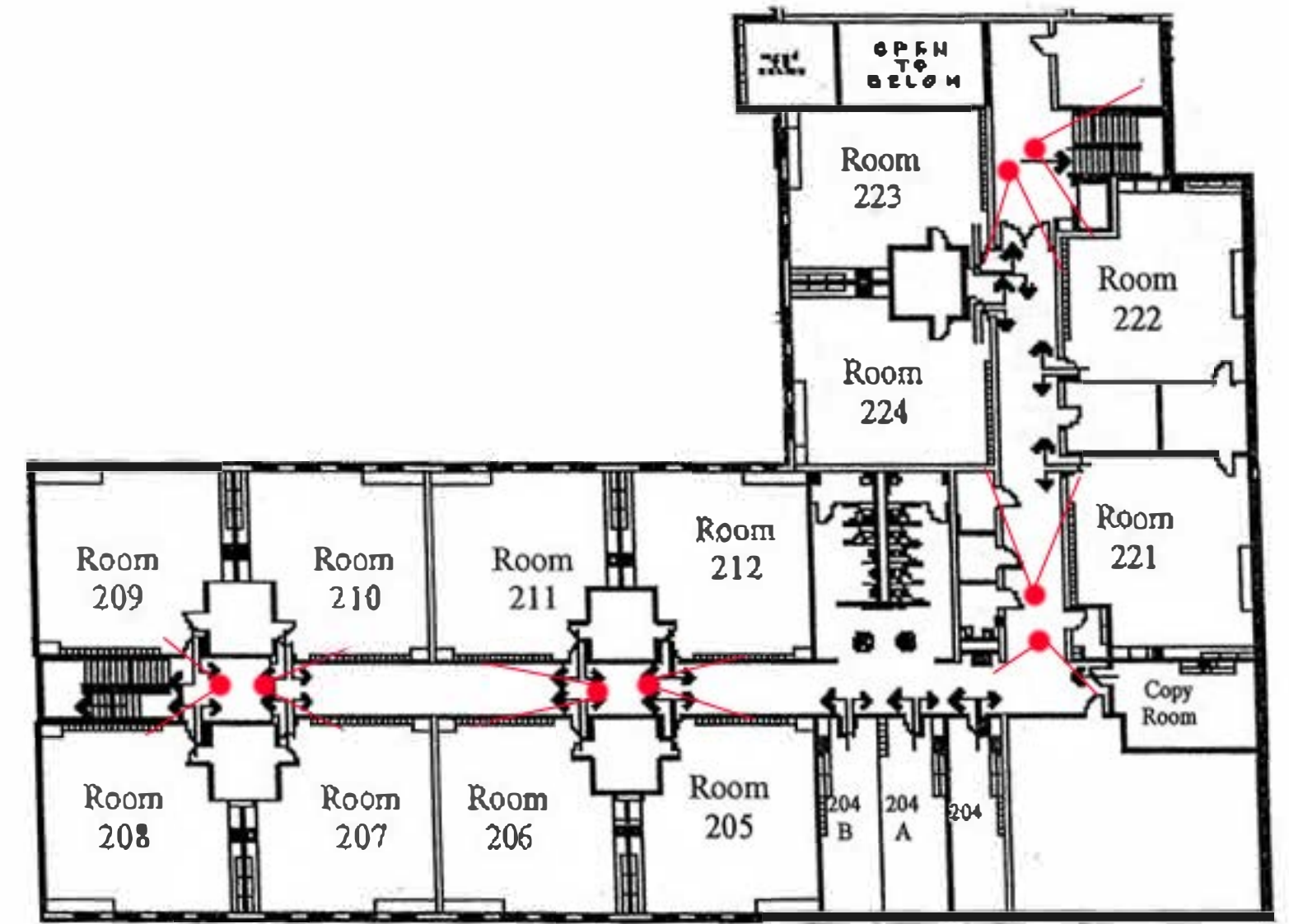
Attachment 4

4.4 Withamsville-Tobasco Elementary School

- New Internal Camera
- New External Camera



First Floor

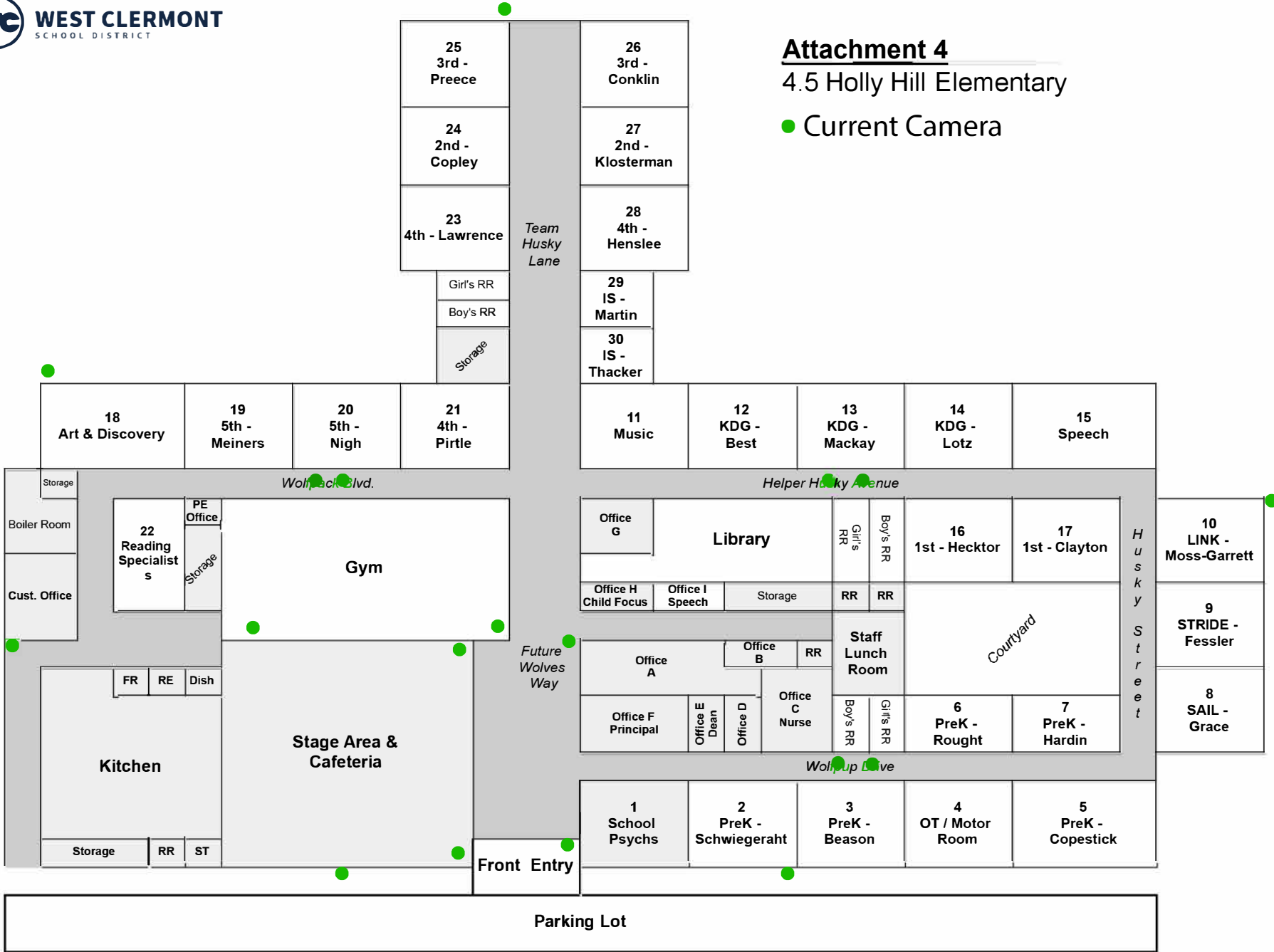


Second Floor

Attachment 4

4.5 Holly Hill Elementary

- Current Camera



Attachment 4

4.6 Holly Hill Elementary

- New Interior Camera
- New Exterior Camera

