



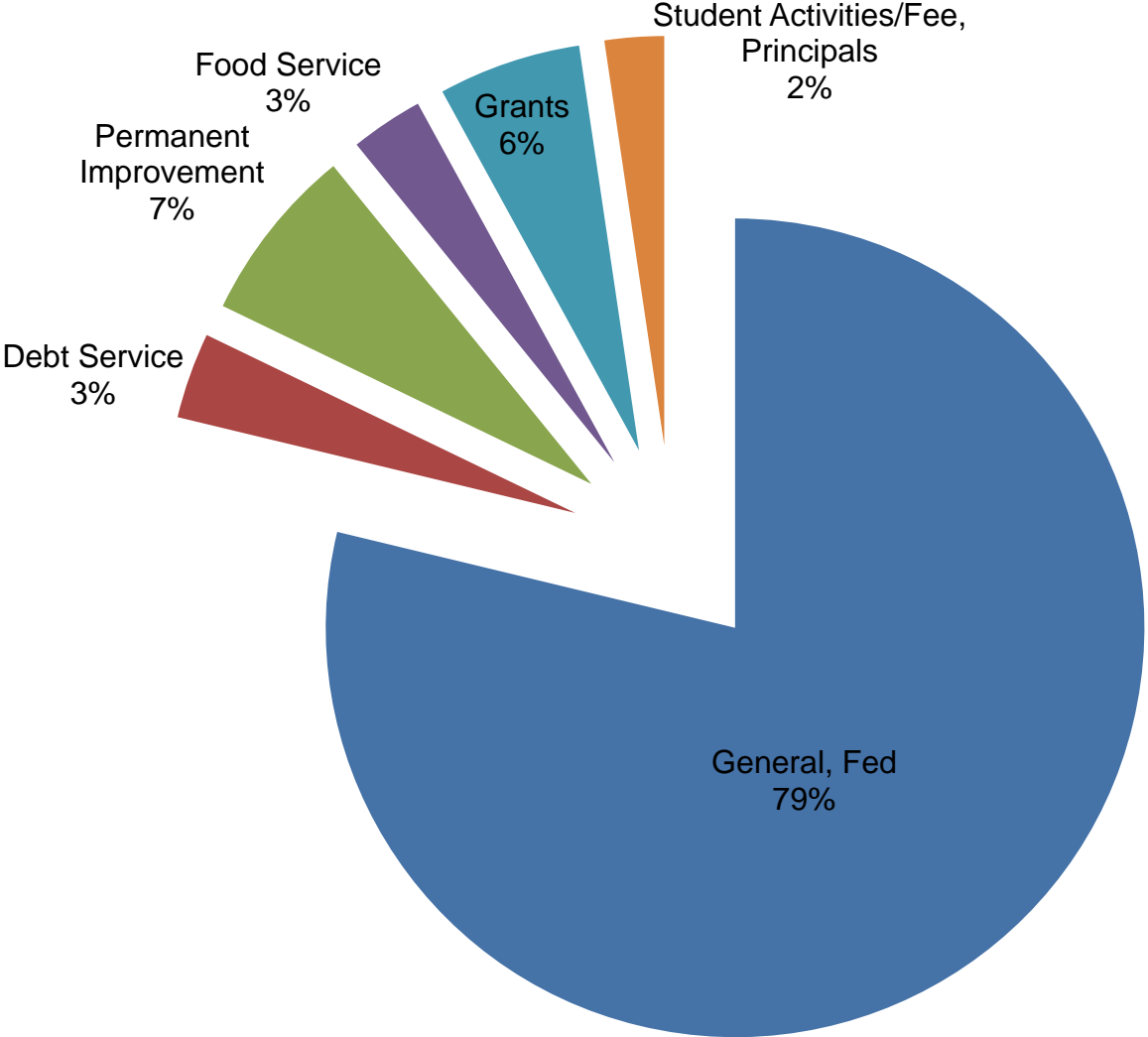
# West Clermont Local Schools

*September 26, 2011*

*FY 12 Permanent Appropriations*

*Alana Cropper, CPA*

# FY 12 Permanent Appropriations - \$83,709,610





# Salaries

- 52.3% of Appropriations (\$34,506,216)
  - 4.5% Decrease, FY12 vs. FY11
  - 2.55% Decrease, FY10 (\$37,079,957) vs. FY11 (\$36,134,179)
  - Contractual Increase – 0%
  - 11/12 Staff Reductions



# Benefits

	2011
Retirement	\$5,412,873
Health Insurance	6,257,969
Dental Insurance	543,979
Workers Comp.	234,599
Medicare	433,642
Life Insurance	48,595
Accumulated Leave	29,543
Unemployment	<u>5,467</u>
	\$12,966,667



# Benefits

- 19.6% of Appropriations (\$12,927,621)
  - .11% Decrease, FY12 vs. FY11
  - 4.5% Decrease Salaries from FY12 to FY11
  - 4% Increase Health Insurance
  - 2.63% Increase Dental Insurance
  - 0% Increase Life and LTD Insurance
  - Unemployment



# Contractual Services

2011

---

Transportation	\$7,334,797
Special Education Contracts	2,991,448
Tuition	5,455,211
Utilities	1,285,675
Building Maintenance	406,353
Other	624,512
	<hr/>
	\$18,097,996



# Contractual Services

- 25% of Appropriations (\$16,288,674)
  - 10% Decrease, FY12 vs. FY11
  - Reduction of Transportation Services - \$2.9 million
  - 8.6% Decrease in Utilities
  - 6.9% Increase in Tuition
  - 1.2% Increase in Special Education Contracts



# Supplies

2011

---

Fuel	\$636,199
Classroom Supplies	266,207
Maintenance/Custodial	163,163
Library Books/Materials	52,280
Other	47,130
	<hr/>
	\$1,164,979



# Supplies

- 1.6% of Appropriations (\$1,164,979)
  - Budget constant
  - 26.8% Increase in Fuel - \$134,568
  - 22.7% Decrease in Classroom supplies



# Other

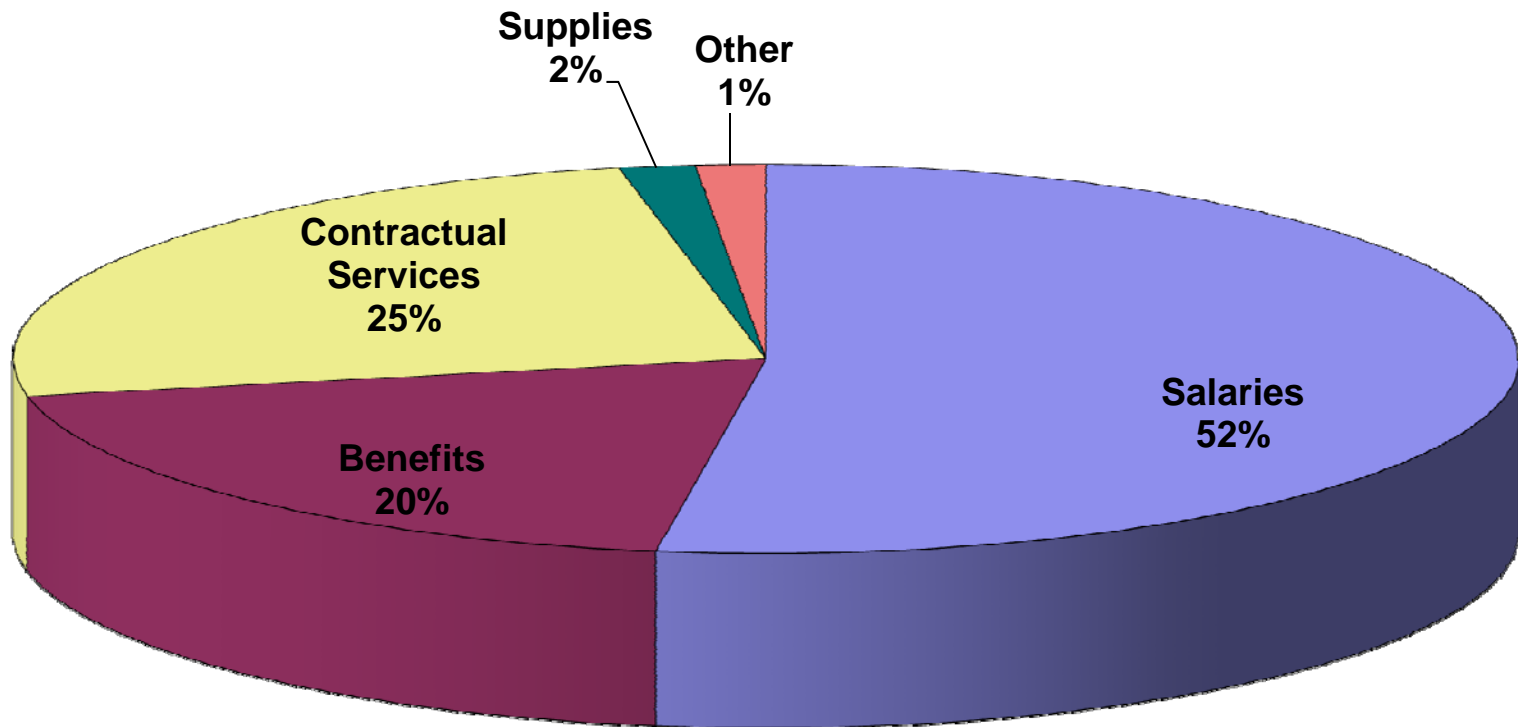
	<u>2011</u>
Aud/Treas Fees	\$666,639
County ESC Deduction	184,562
Property/Liability Insurance	100,306
Other	91,564
	<u>\$1,043,071</u>



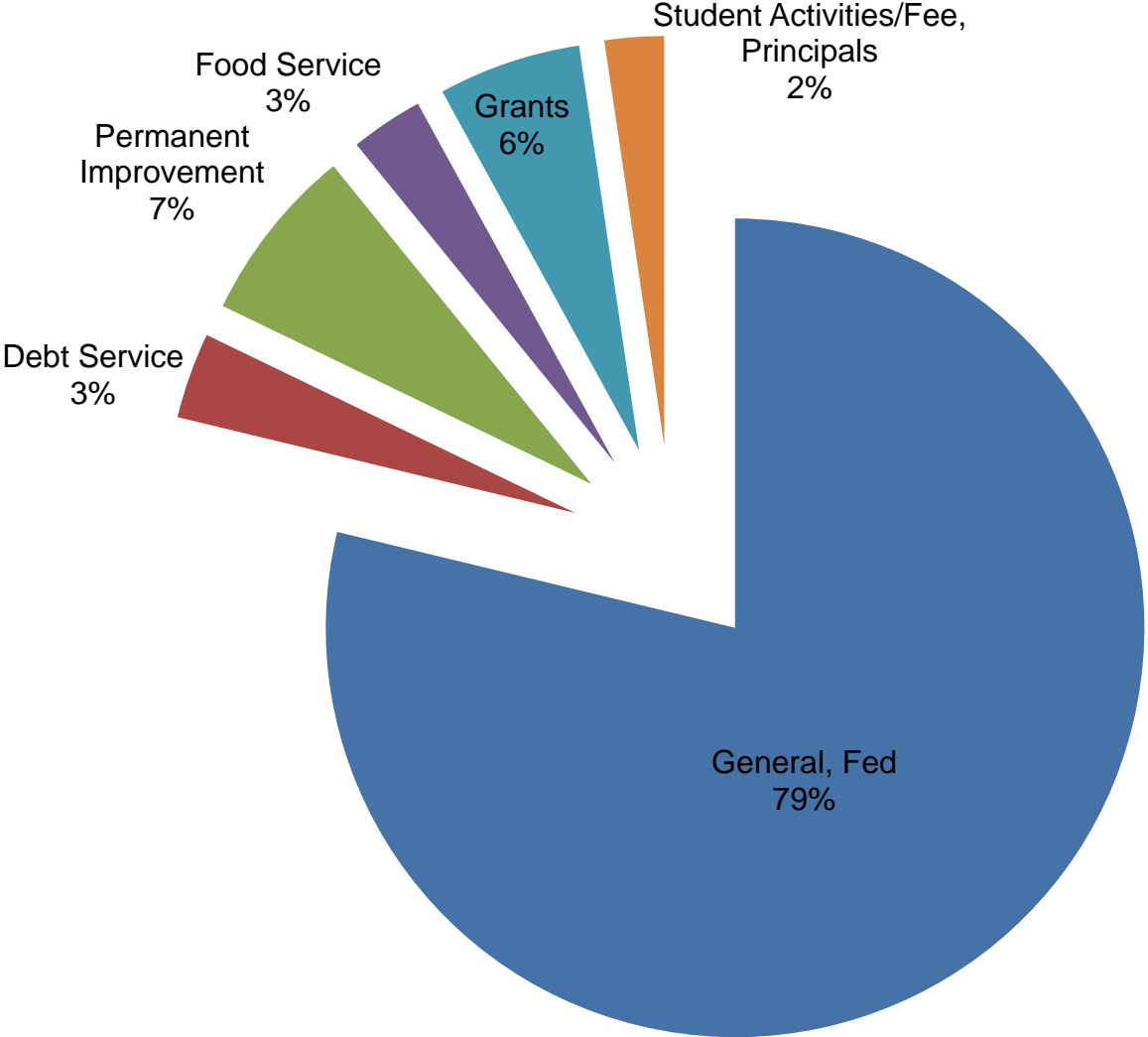
# Other

- 1.5% of Appropriations (\$1,043,071)
  - 1% Increase in Aud/Treas Fees
  - Budget constant

# FY11 Forecast Funds



# FY 12 Permanent Appropriations - \$83,709,610





# Permanent Improvement Fund

	<u>2011</u>
Computer Equipment	\$842,040
Maintenance Contractual	1,335,615
Services/Supplies	
Textbooks	855,758
OASBO Leases	650,489
Other	<u>874,124</u>
	\$4,558,026



# Permanent Improvement Fund

- 7% of Total Appropriations
- Budgeted Items:
  - Computer Equipment
  - Maintenance Equipment & Supplies
  - OASBO Leases
  - Textbooks
  - Library Books



# Debt Service Fund

## 11/12 Appropriations- \$2,843,322

- 1995 Refunded Debt

- \$5,710,000 Principal Outstanding
- \$915,166 paid in 10/11
- Maturity 12/01/2019

- 2008 Debt

- \$30,000,000 issued, \$28,385,000 Outstanding
- \$1,912,887 paid in 10/11
- Maturity 12/01/2036